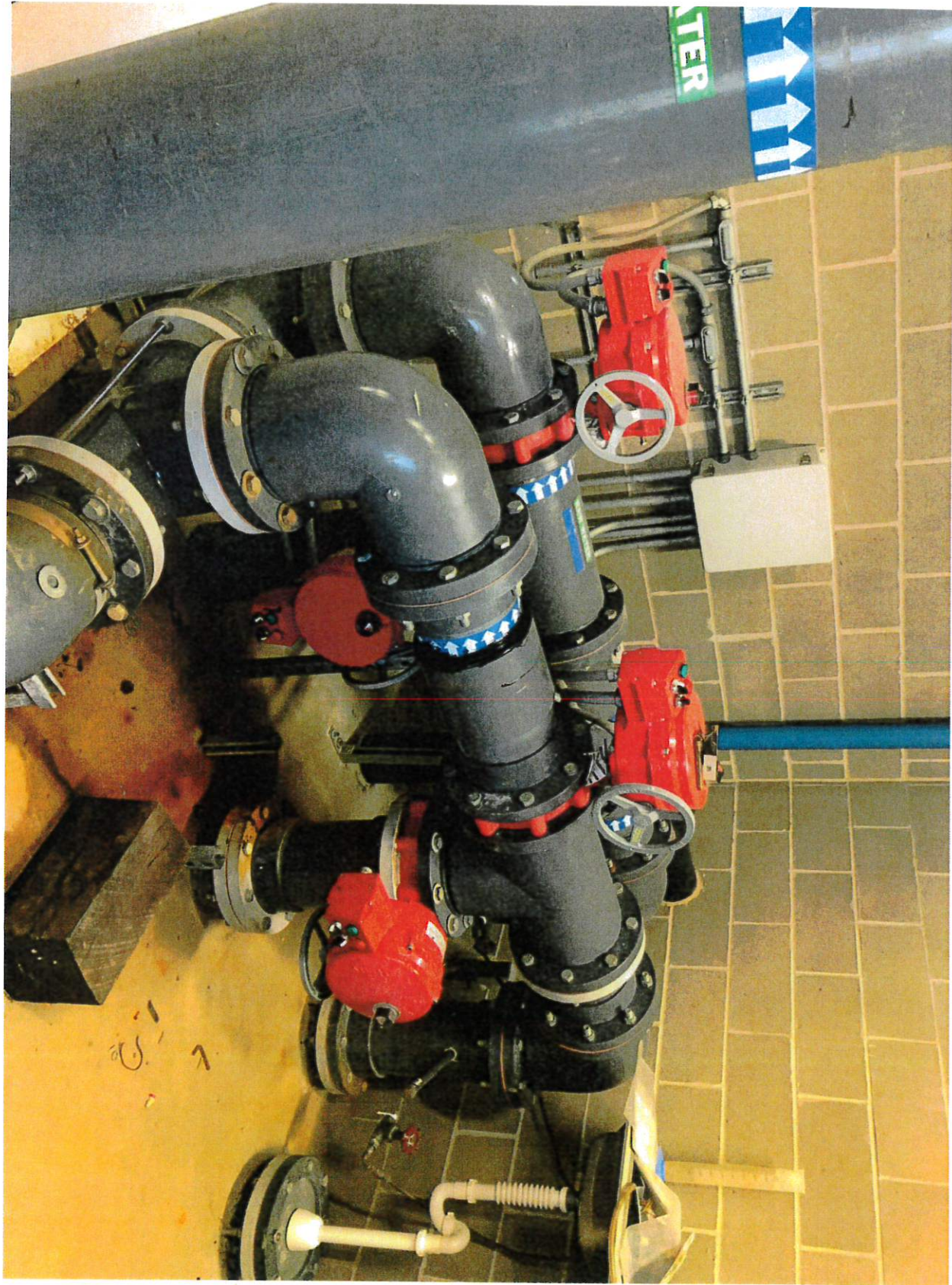


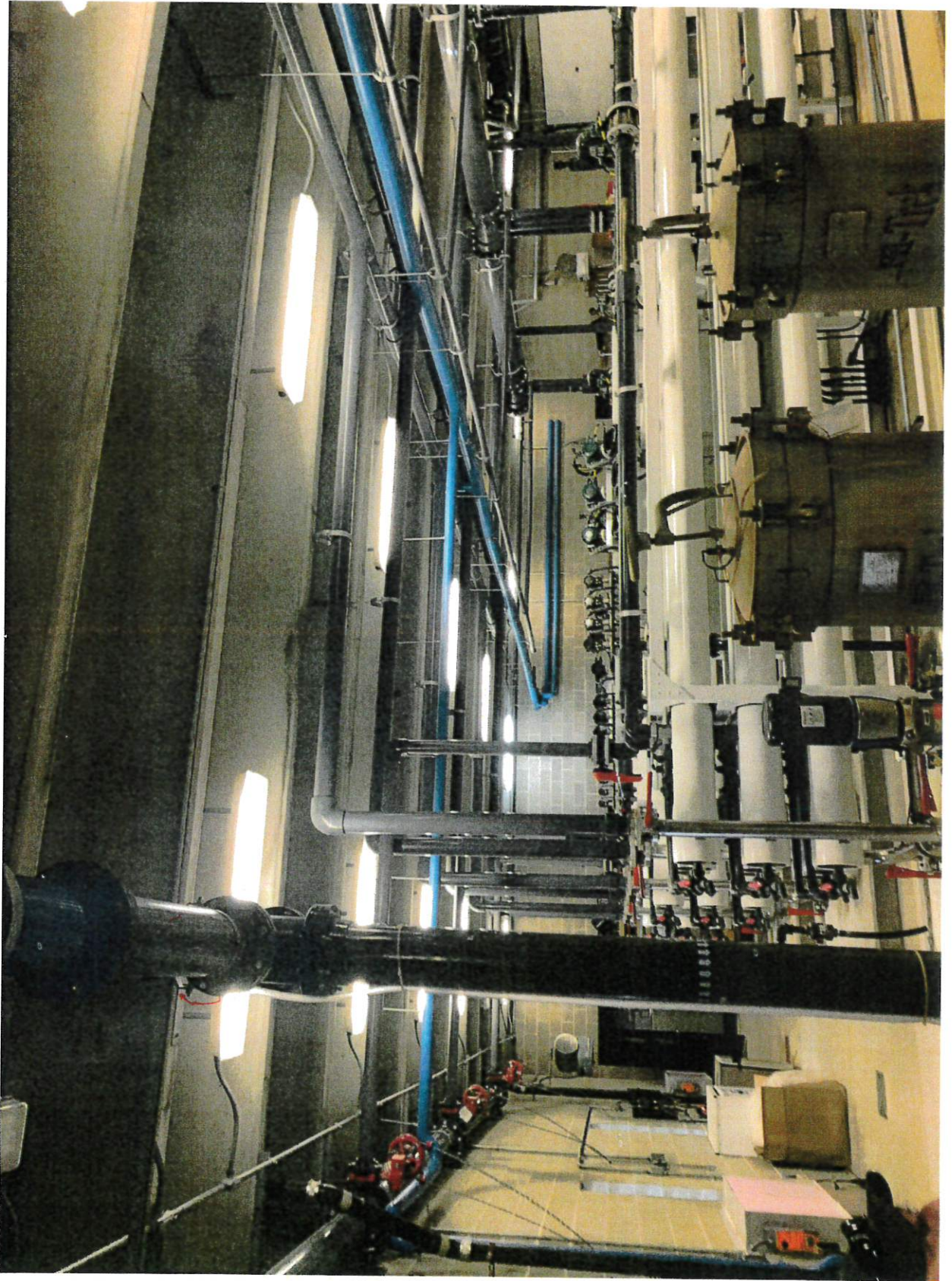
**CITY OF RIVERSIDE COUNCIL WORK SESSION
WATER TREATMENT PLANT
3126 HWY 22**

COUNCIL WORK SESSION
Monday, September 19, 2022 – 5:00 P.M.

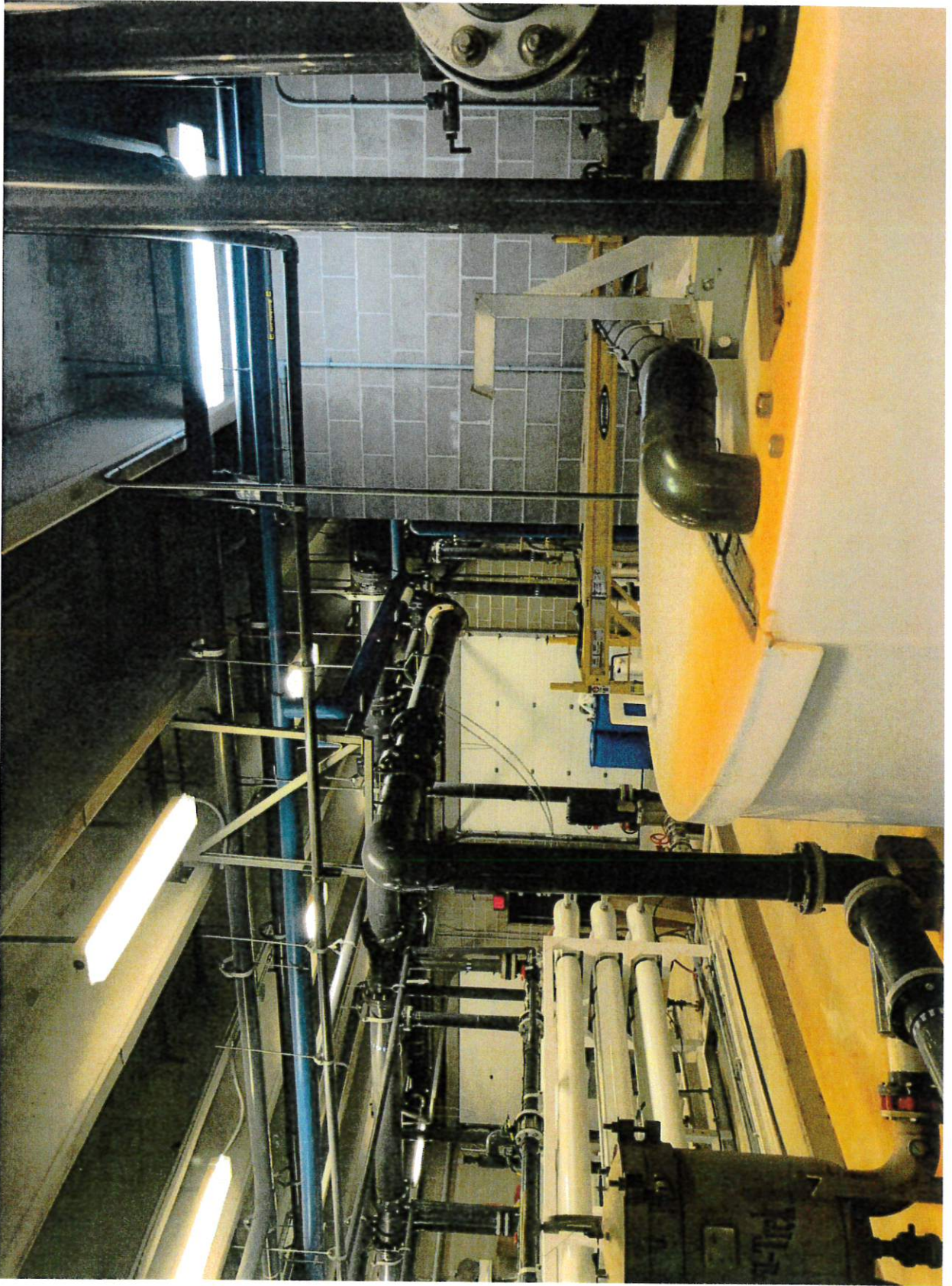
1. Review of Repair Issues at Water Treatment Plant with Engineers

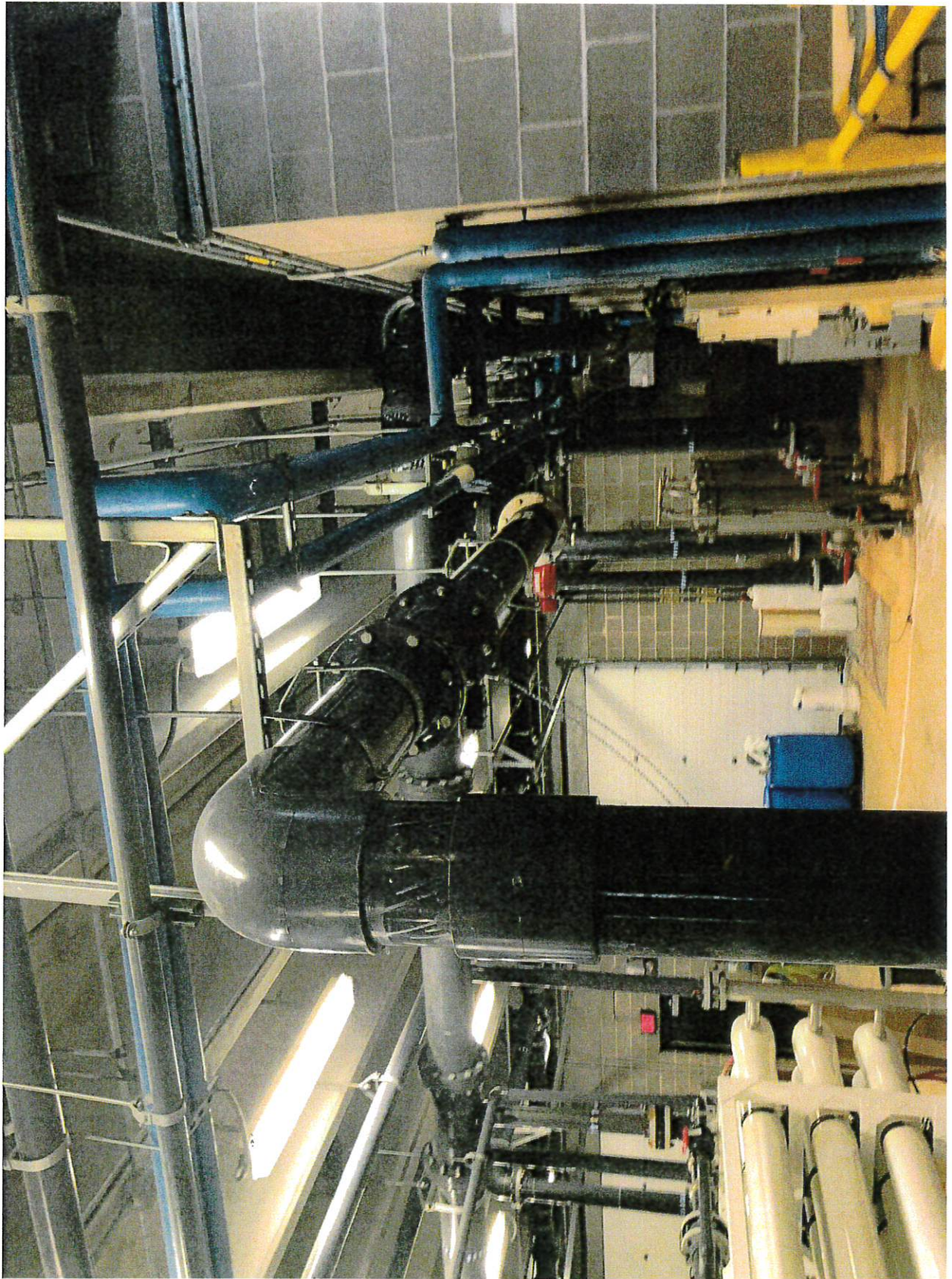


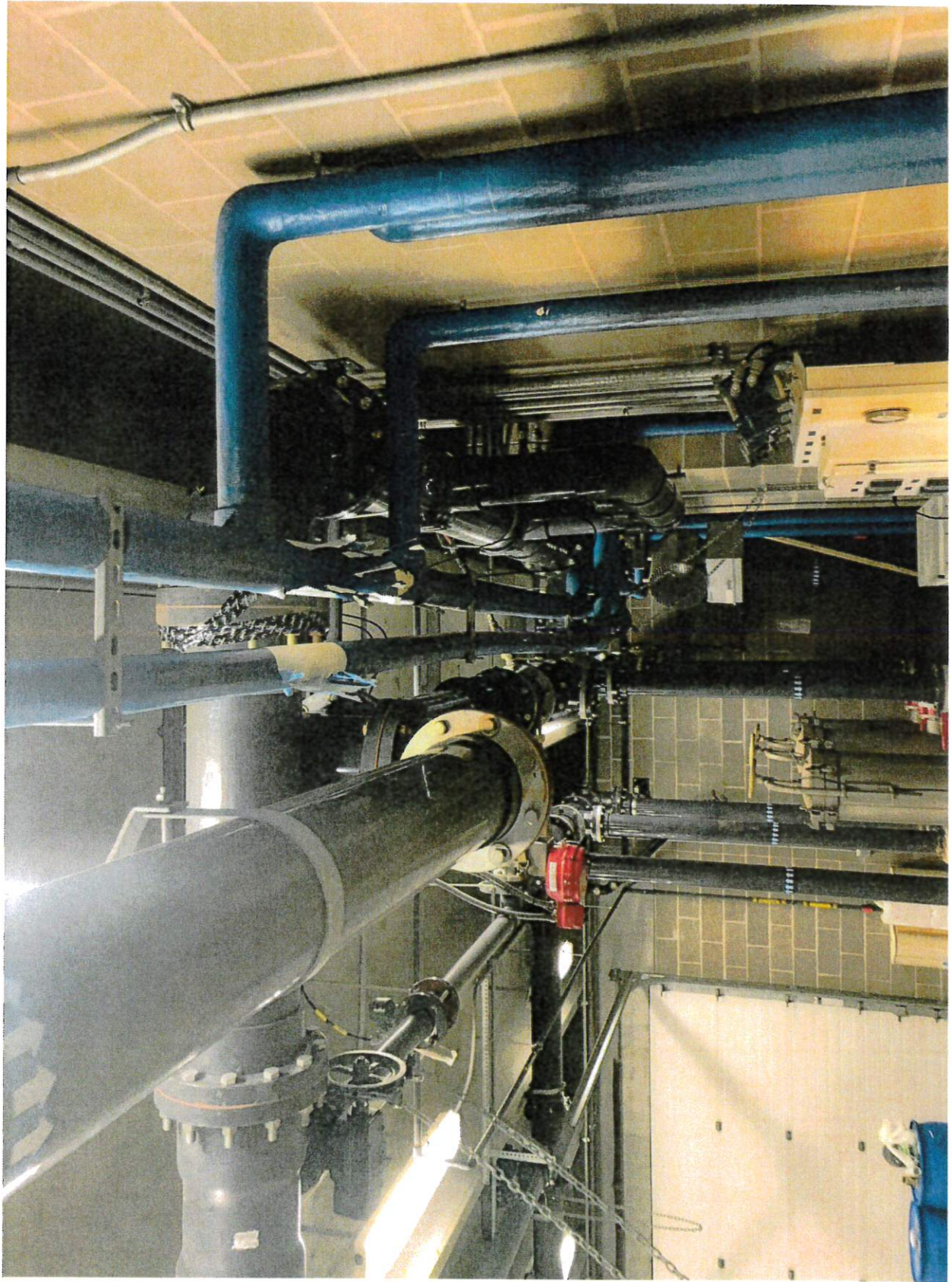




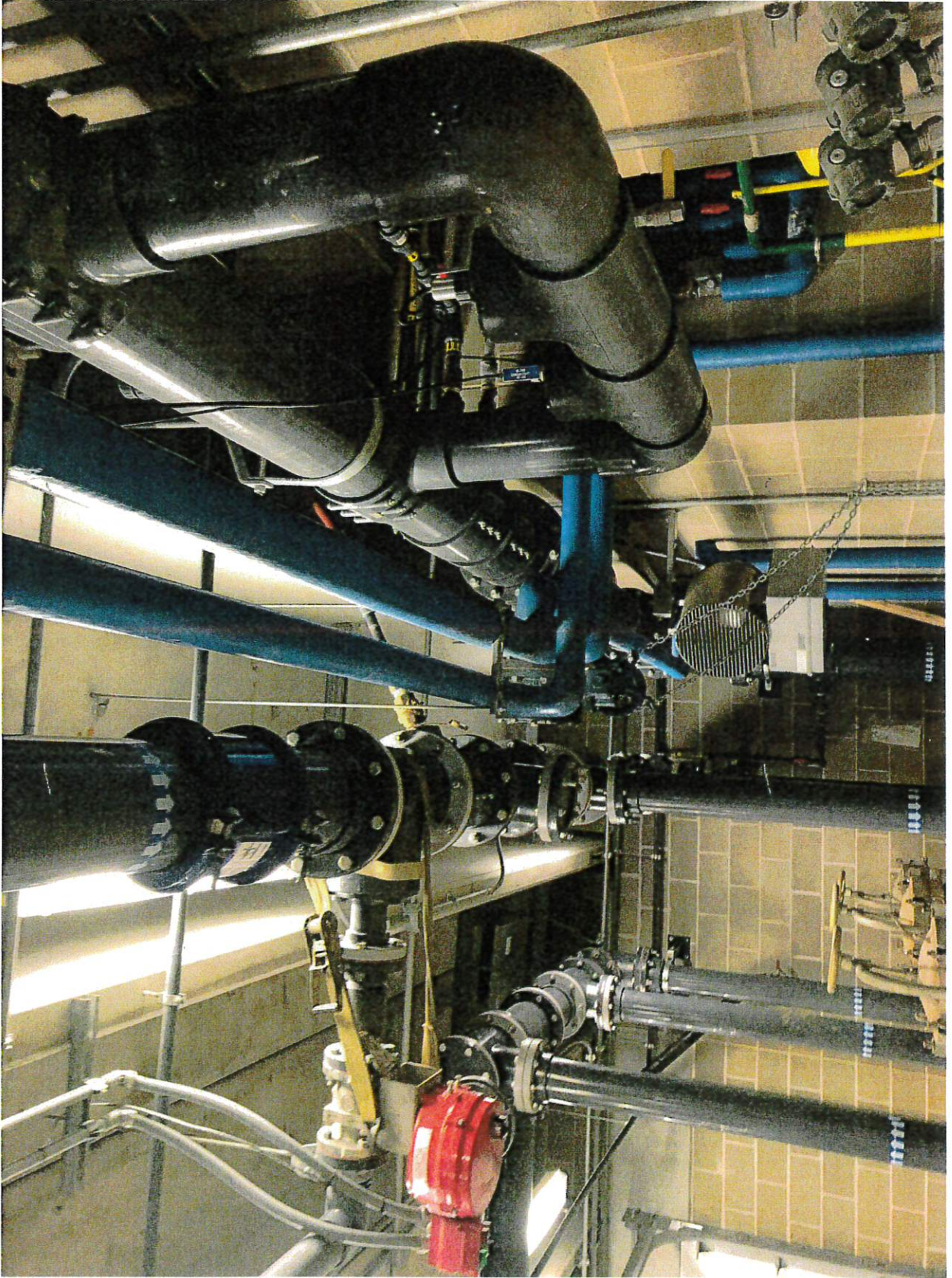




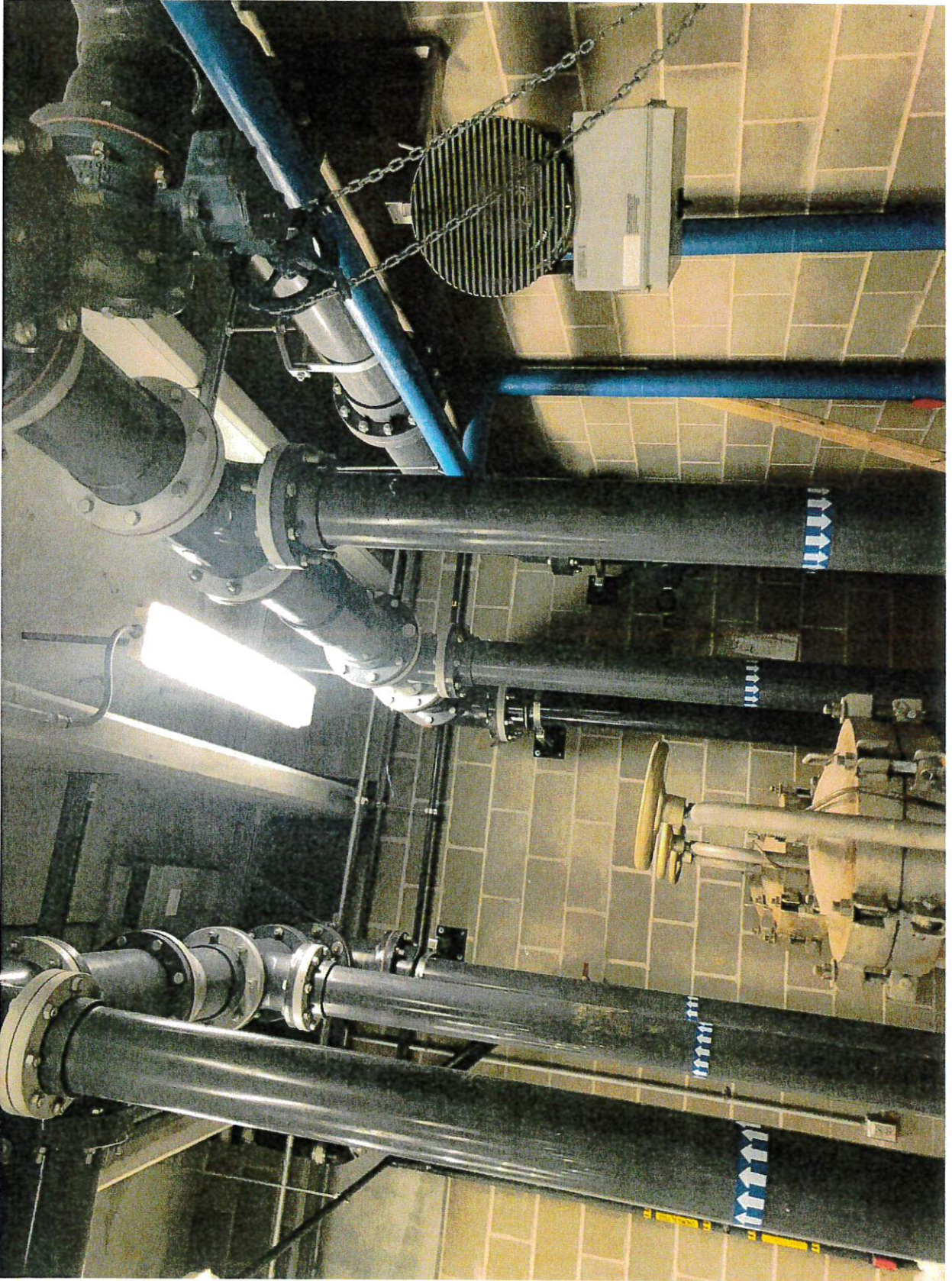










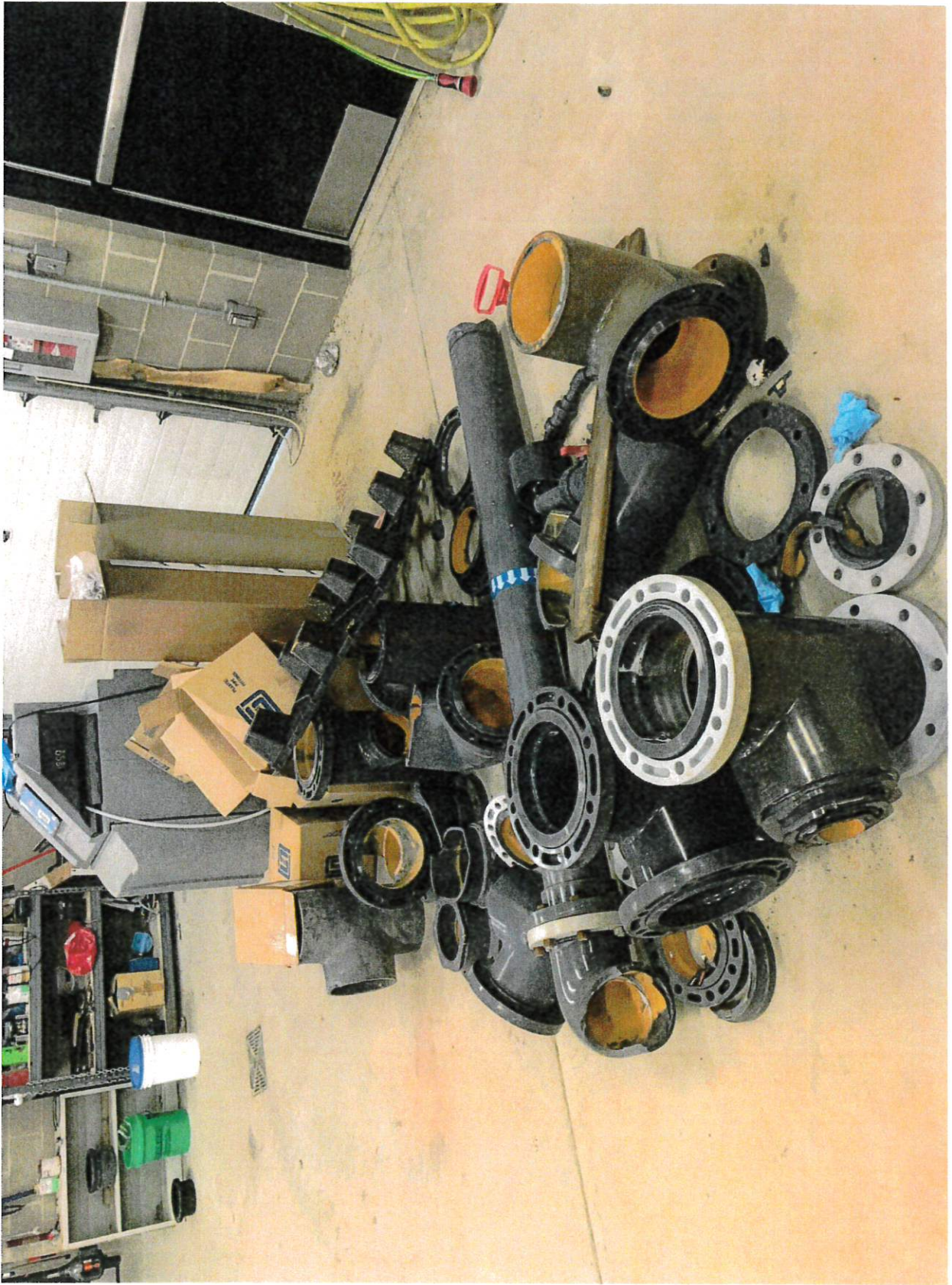


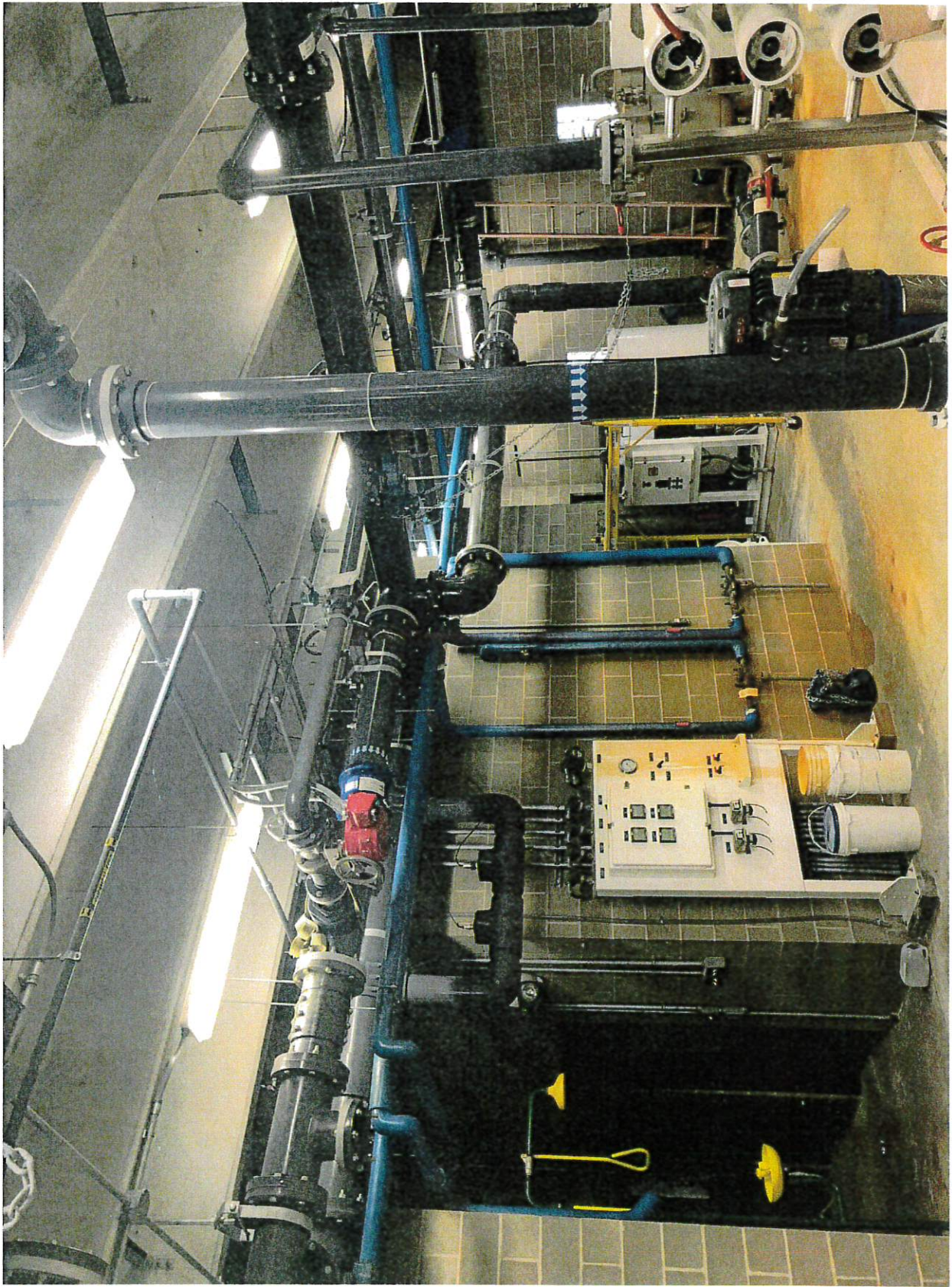








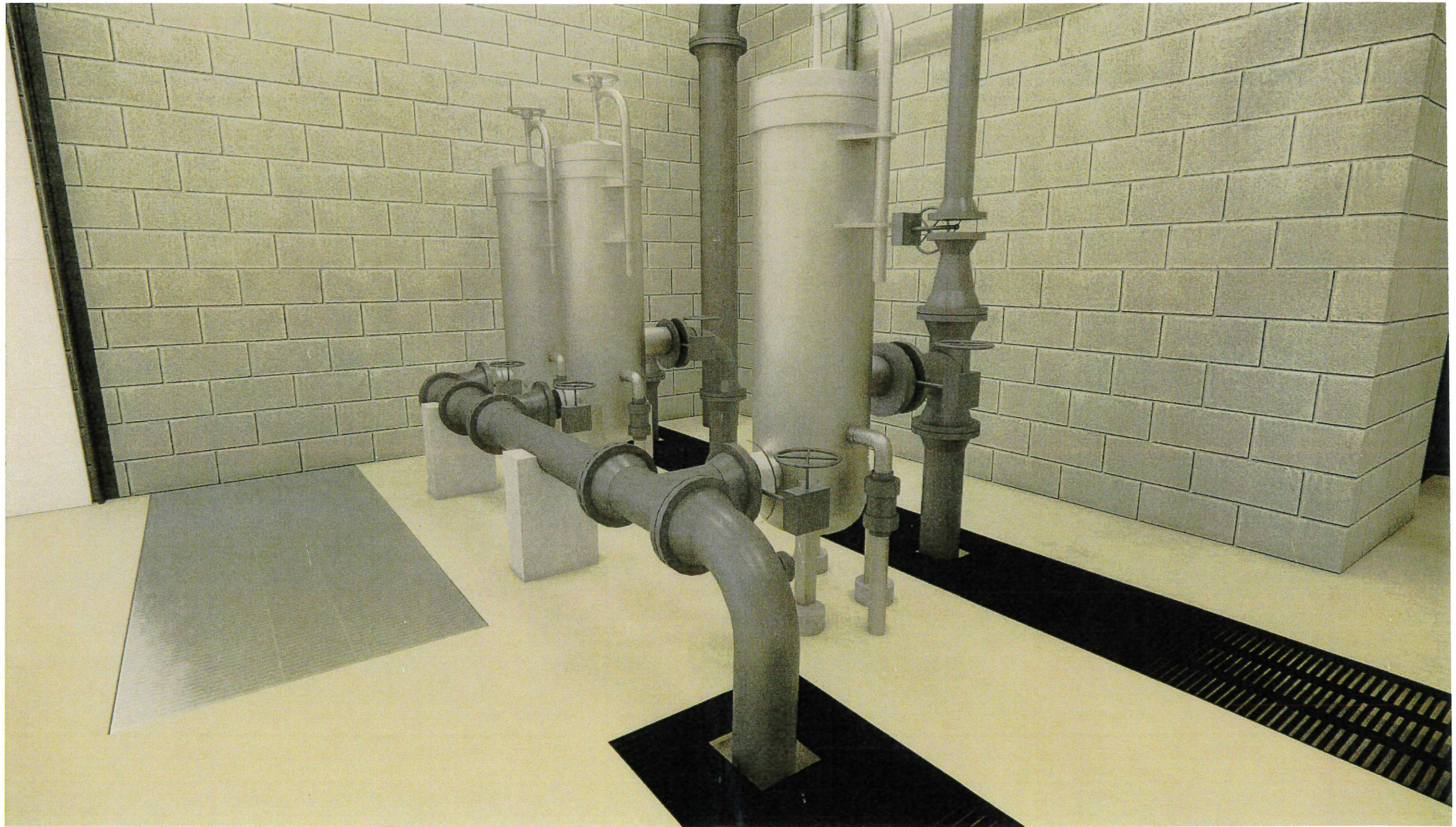




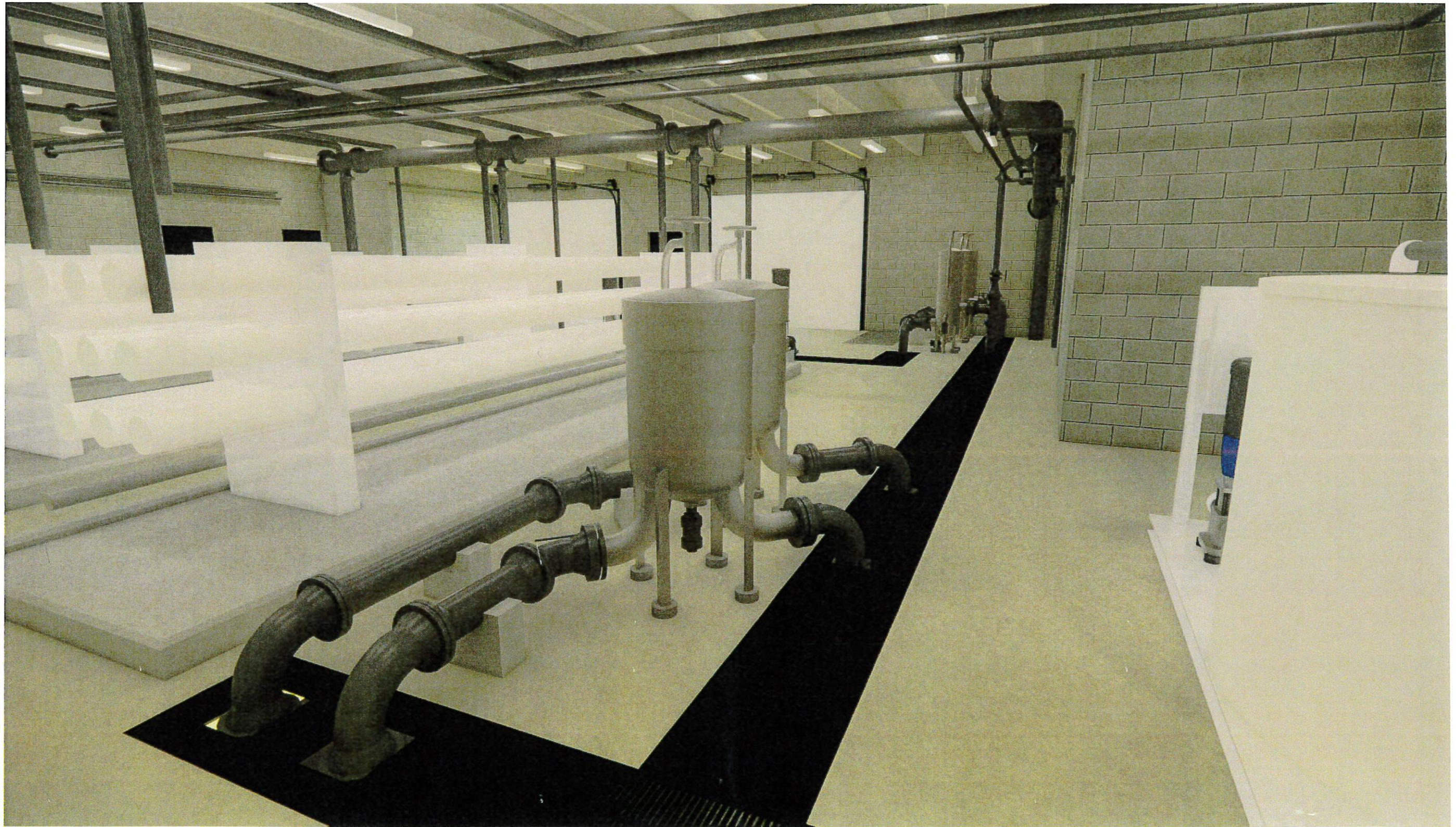




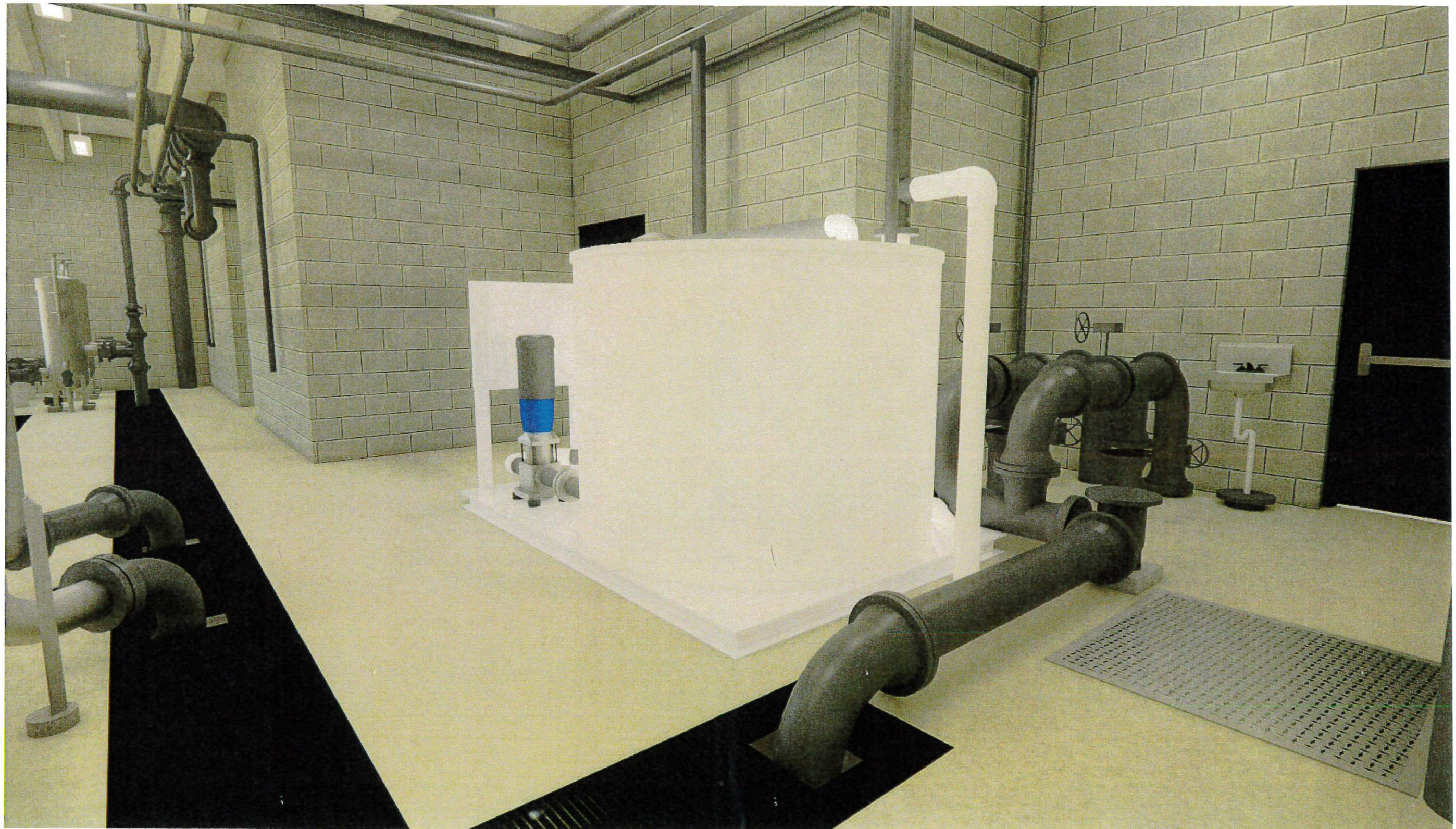
R.O. Feed Piping
Riverside WTP Pipe Improvements



Cartridge Filter Piping
Riverside WTP Pipe Improvements



Bag Filter Piping
Riverside WTP Pipe Improvements



Piping Adjacent to R.O. Cleaning System
Riverside WTP Pipe Improvements

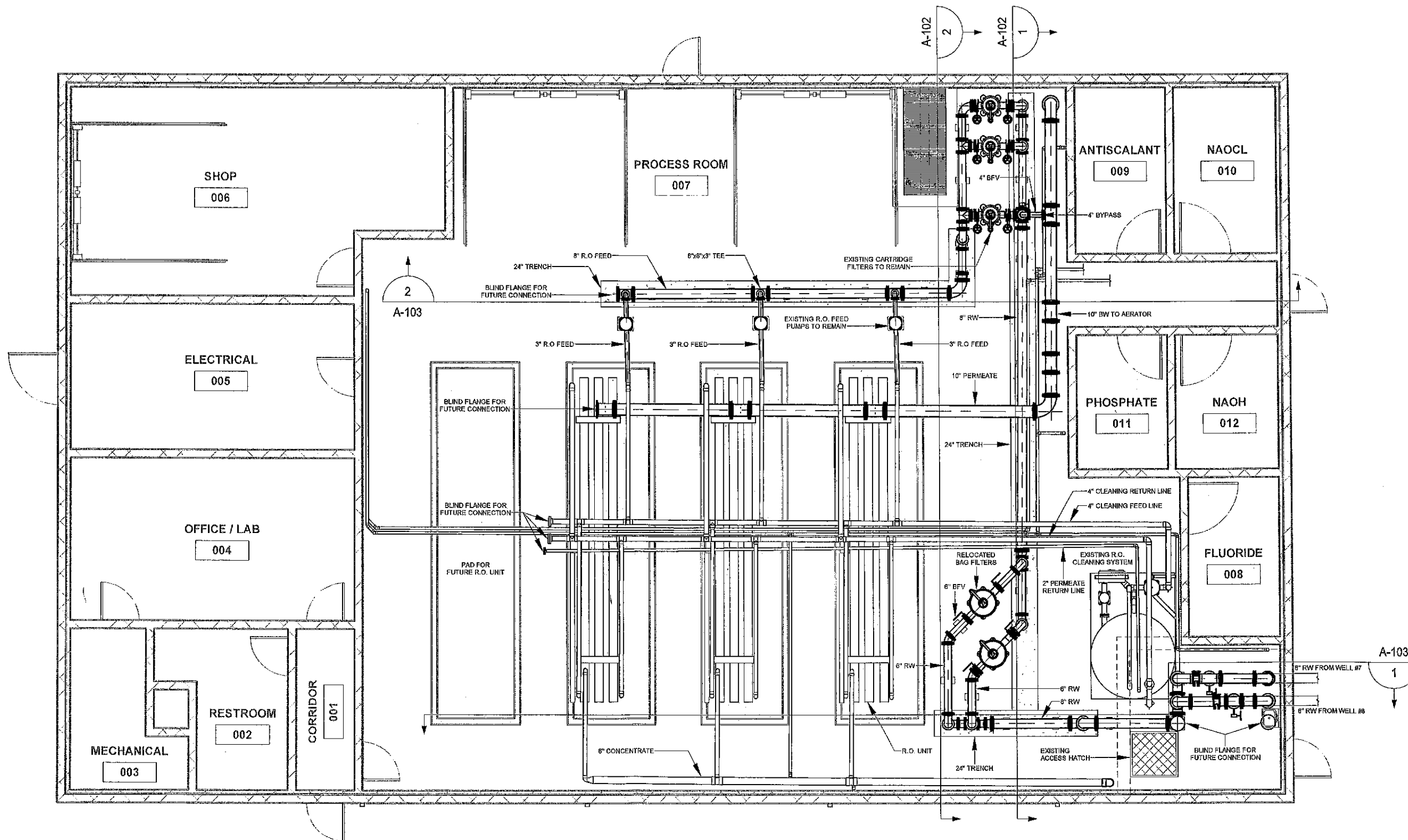




Raw Water Supply Piping
Riverside WTP Pipe Improvements

PLOTTED: 7/19/2022 5:24:37 PM

FILE PATH: Z:\Riverside 36138 WTP Pipe Failure\Drawing Files\Rev\103-Architectural\Riverside WTP Pipe Replacement Opt 2.rvt

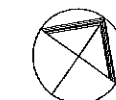


PLAN

1/8" = 1'-0"

NOTES:

1. NEW STAINLESS STEEL PIPING TO BE INSTALLED SHOWN BOLD.



As indicated

| DATE | REVISIONS | SCALE | As Indicated |
|-----------|--|------------|--------------|
| 7-19-2022 | IMPERIAL WIDE FLANGES REPLACED WITH CLASS 150 SLP-ON FLANGES FOR ALL PIPE SIZES. | DRAWN | JLE, MPL |
| | | CHECKED | |
| | | APPROVED | |
| | | DATE | 7-14-2022 |
| | | ISSUED FOR | REVIEW |



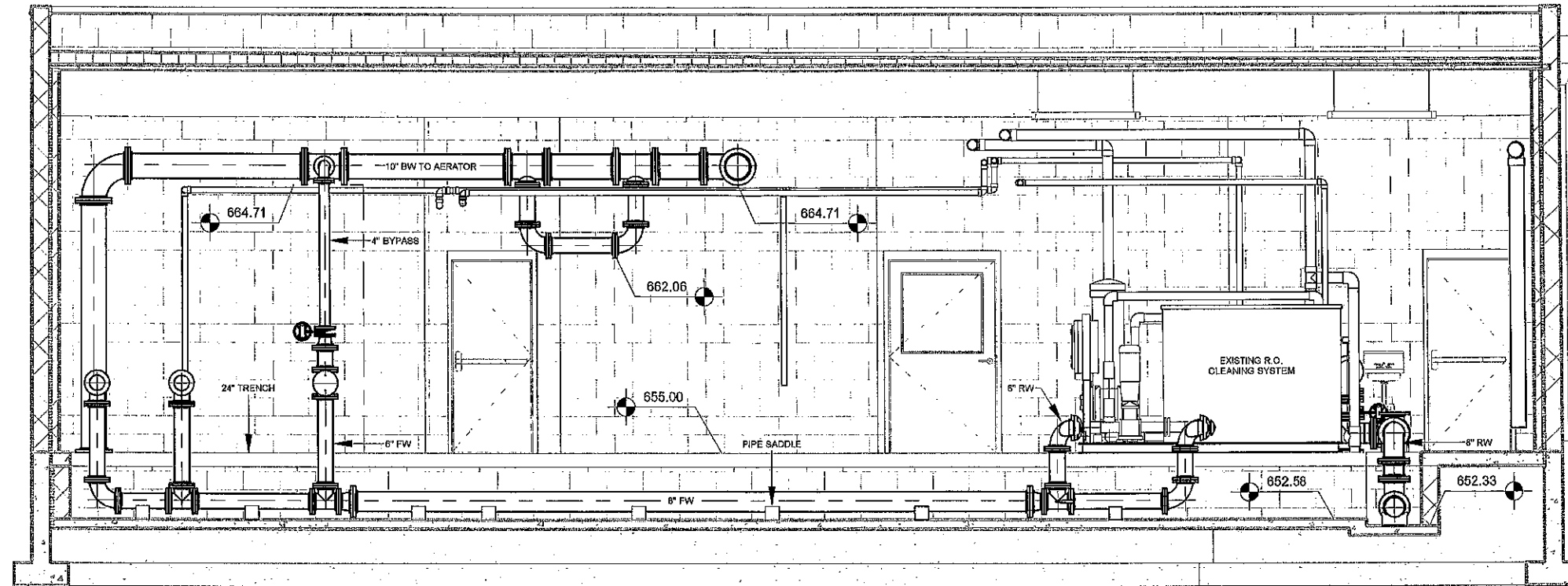
**RIVERSIDE WTP PIPE IMPROVEMENTS
CITY OF RIVERSIDE**

2600 University Parkway - Suite 1 • Coralville, Iowa 52241-1565
319-466-1000 • 319-466-1008(FAX) • 888-241-8001(WATS)

PROCESS PIPING PLAN

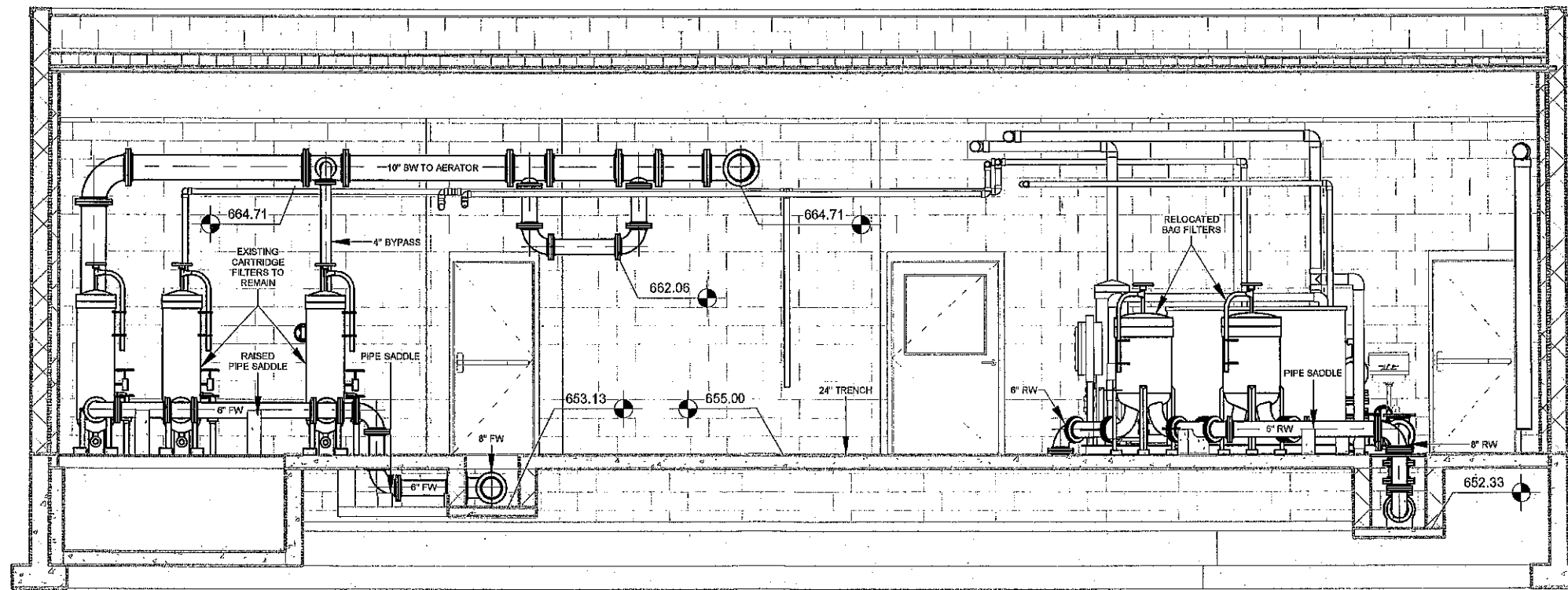
| | |
|----------|--------|
| DWG. NO. | A-101 |
| PROJECT | 36138 |
| | 1 OF 3 |

PLOTTED: 7/19/2022 5:24:42 PM



Piping Cross Section East

3/16" = 1'-0"



Piping Cross Section West

3/16" = 1'-0"

NOTES:

1. NEW STAINLESS STEEL PIPING TO BE INSTALLED SHOWN BOLD.

FILE PATH: Z:\riverside 36133 WTP Pipe Failure\Drawing Files\Rev\03-Architectural\Riverside WTP Pipe Replacement Opt. 2.rvt

| DATE | REVISIONS |
|-----------|---|
| 7-18-2022 | IMPERIAL WIDE FLANGES REPLACED WITH CLASS 150 SLIP-ON FLANGES FOR ALL PIPE SIZES. |
| | |
| | |
| | |

| | |
|------------|---------------|
| SCALE | 3/16" = 1'-0" |
| DRAWN | JLE, MPL |
| CHECKED | |
| APPROVED | |
| DATE | 7-14-2022 |
| ISSUED FOR | REVIEW |



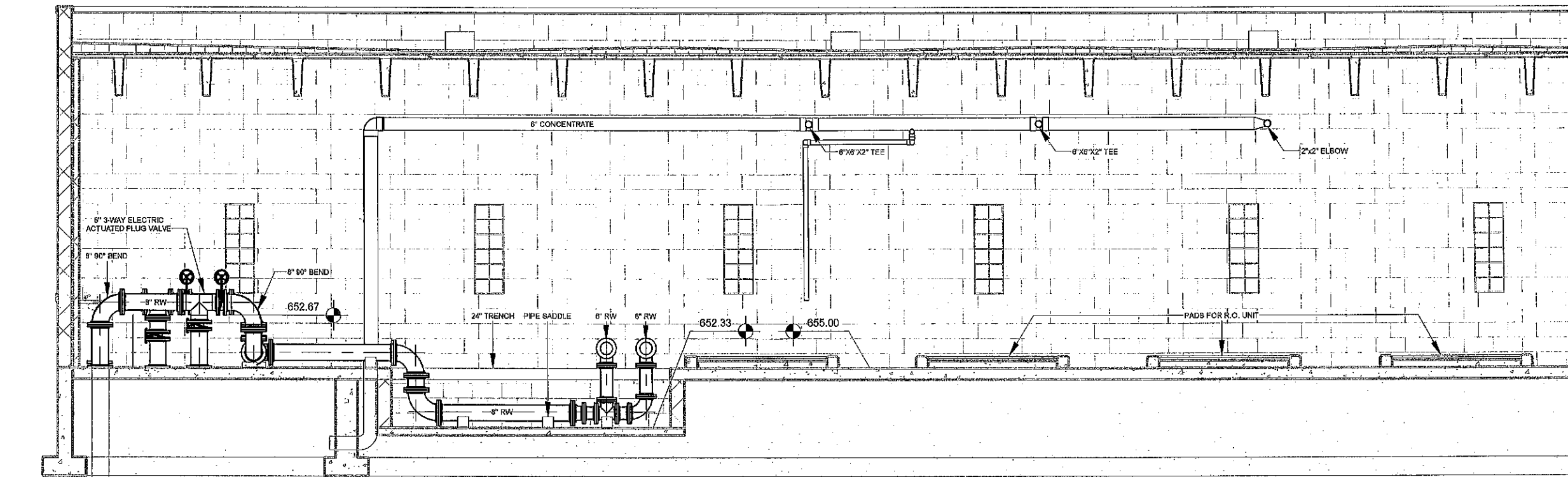
RIVERSIDE WTP PIPE IMPROVEMENTS
CITY OF RIVERSIDE

2500 University Parkway - Suite 1 • Coralville, Iowa 52241-1555
319-466-1000 • 319-466-1008(FAX) • 888-241-8001(WATS)

PROCESS PIPING SECTIONS

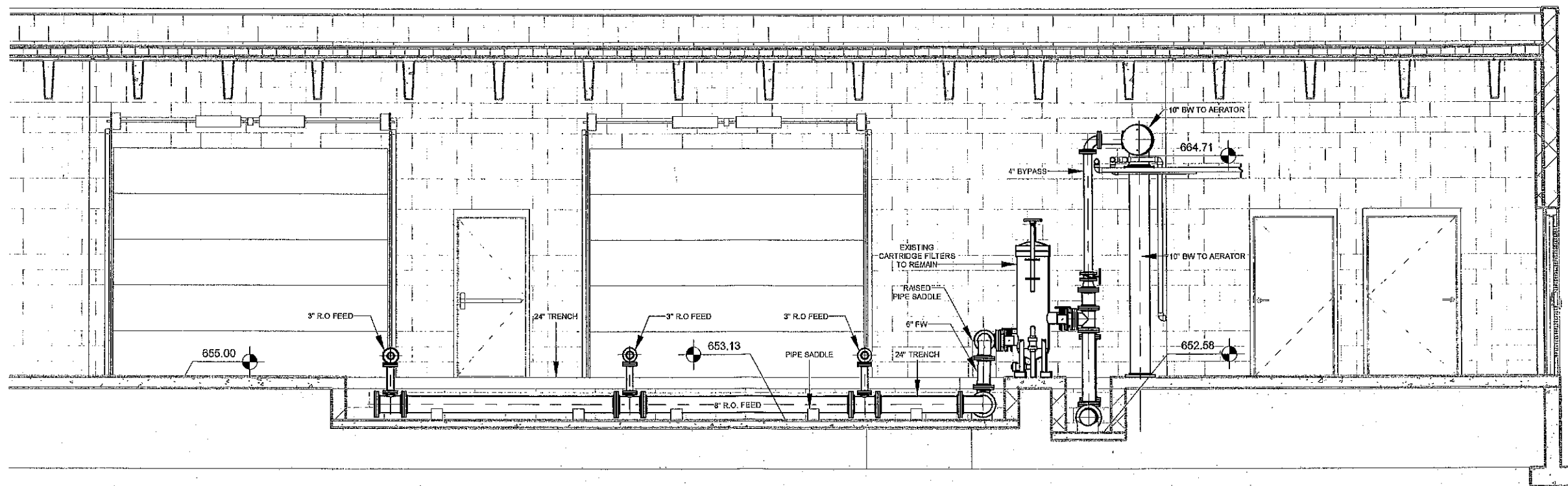
| | |
|----------|--------|
| DWG. NO. | A-102 |
| PROJECT | 36133 |
| | 2 OF 3 |

PLOTTED: 7/19/2022 5:24:53 PM



Piping Cross Section South

3/16" = 1'-0"



Piping Cross Section North

3/16" = 1'-0"

NOTES:

1. NEW STAINLESS STEEL PIPING TO BE INSTALLED SHOWN BOLD.

FILE PATH: Z:\Riverside 36199 WTP Pipe Failure\Drawing Files\Rev\105-Architectural\Riverside WTP Pipe Replacement Opt 2.rvt

| DATE | REVISIONS |
|-----------|---|
| 7-10-2022 | IMPERIAL WIDE FLANGES REPLACED WITH CLASS 150 SLIP-ON FLANGES FOR ALL PIPE SIZES. |

| | |
|------------|---------------|
| SCALE | 3/16" = 1'-0" |
| DRAWN | JLE, MFL |
| CHECKED | |
| APPROVED | |
| DATE | 7-14-2022 |
| ISSUED FOR | REVIEW |



RIVERSIDE WTP PIPE IMPROVEMENTS
CITY OF RIVERSIDE

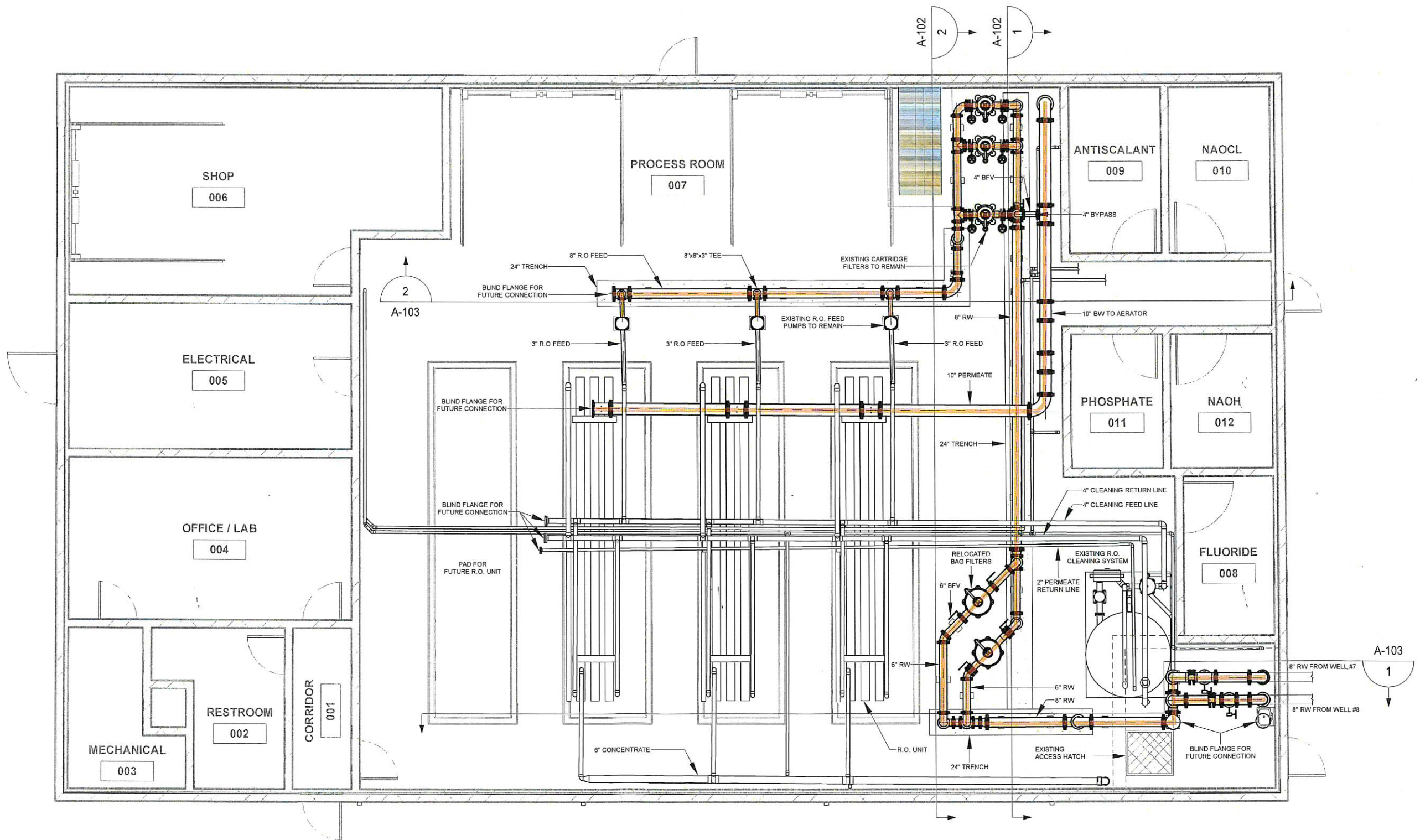
2600 University Parkway - Suite 1 • Coralville, Iowa 52241-1555
319-466-1000 • 319-466-1008(FAX) • 888-241-8001(WATS)

PROCESS PIPING SECTIONS

| | |
|----------|--------|
| DWG. NO. | A-103 |
| PROJECT | 3 OF 3 |
| | 36139 |

PLOTTED: 7/19/2022 4:57:02 PM

FILE PATH: Z:\Riverside 36139 WTP Pipe Failure\Drawing Files\Rev\03-Architectural\Riverside WTP Pipe Replacement Opt 2.rvt



PLAN
1/8" = 1'-0"

NOTES:

1. NEW STAINLESS STEEL PIPING TO BE INSTALLED SHOWN BOLD.



As indicated

| DATE | REVISIONS | SCALE | As indicated |
|-----------|---|------------|--------------|
| 7-19-2022 | IMPERIAL WIDE FLANGES REPLACED WITH CLASS 150 SLIP-ON FLANGES FOR ALL PIPE SIZES. | DRAWN | JLE, MPL |
| | | CHECKED | |
| | | APPROVED | |
| | | DATE | 7-14-2022 |
| | | ISSUED FOR | REVIEW |



RIVERSIDE WTP PIPE IMPROVEMENTS
CITY OF RIVERSIDE

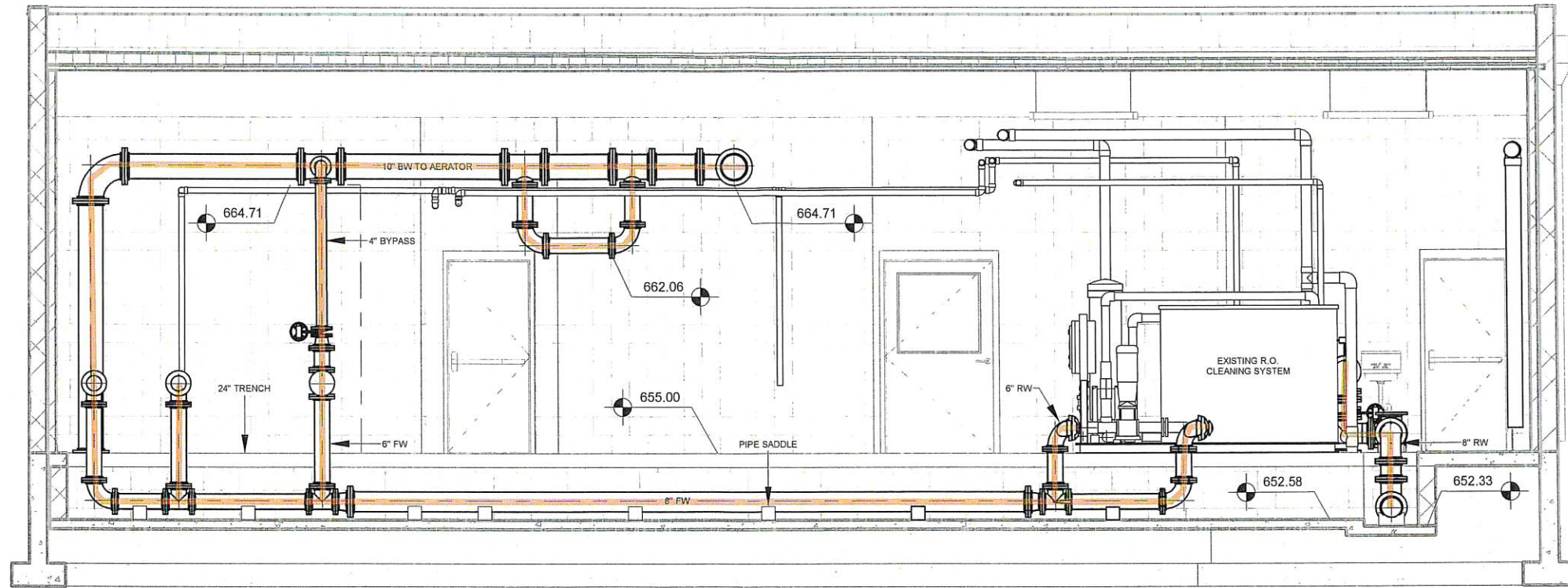
2600 University Parkway - Suite 1 • Coralville, Iowa 52241-1565
319-466-1000 • 319-466-1008(FAX) • 888-241-8001(WATS)

PROCESS PIPING PLAN

| DWG. NO. |
|---------------|
| A-101 |
| 1 OF 3 |
| PROJECT 36139 |

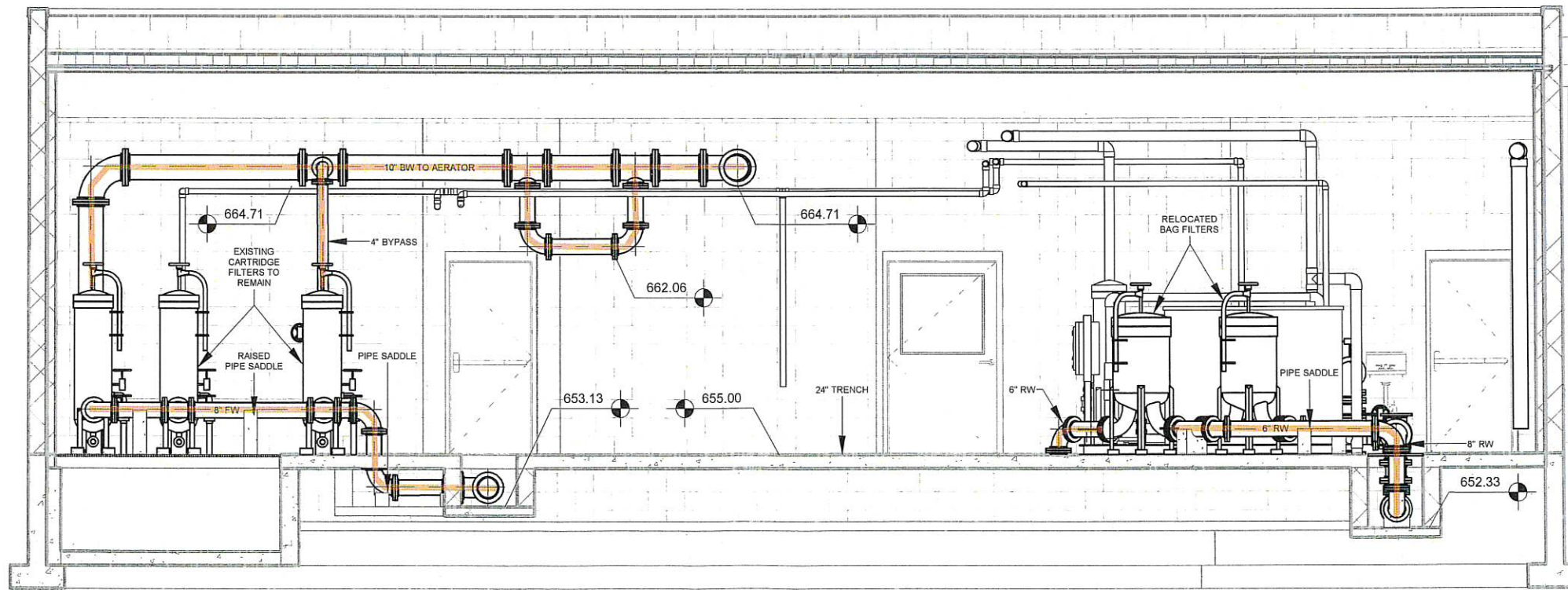
PLOTTED: 7/19/2022 4:57:09 PM

FILE PATH: Z:\Riverside 36139 WTP Pipe Failure\Drawing Files\Revit\03-Architectural\Riverside WTP Pipe Replacement Opt 2.rvt



Piping Cross Section East

3/16" = 1'-0"



Piping Cross Section West

3/16" = 1'-0"

NOTES:

1. NEW STAINLESS STEEL PIPING TO BE INSTALLED SHOWN BOLD.

| DATE | REVISIONS |
|-----------|---|
| 7-19-2022 | IMPERIAL WIDE FLANGES REPLACED WITH CLASS 159 SLIP-ON FLANGES FOR ALL PIPE SIZES. |
| | |
| | |
| | |

| | |
|------------|---------------|
| SCALE | 3/16" = 1'-0" |
| DRAWN | JLE, MPL |
| CHECKED | |
| APPROVED | |
| DATE | 7-14-2022 |
| ISSUED FOR | REVIEW |



**RIVERSIDE WTP PIPE IMPROVEMENTS
CITY OF RIVERSIDE**

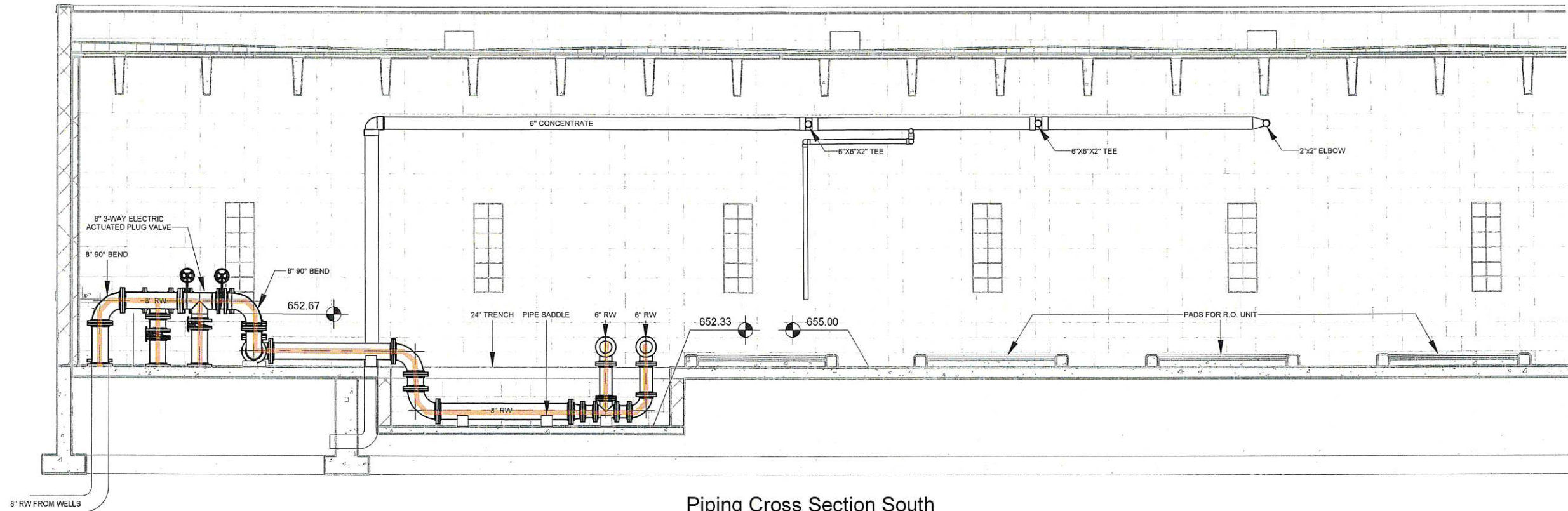
2600 University Parkway - Suite 1 • Coralville, Iowa 52241-1565
319-466-1000 • 319-466-1008(FAX) • 888-241-8001(WATS)

PROCESS PIPING SECTIONS

| | |
|----------|-------|
| DWG. NO. | A-102 |
| PROJECT | 36139 |
| | |
| | |

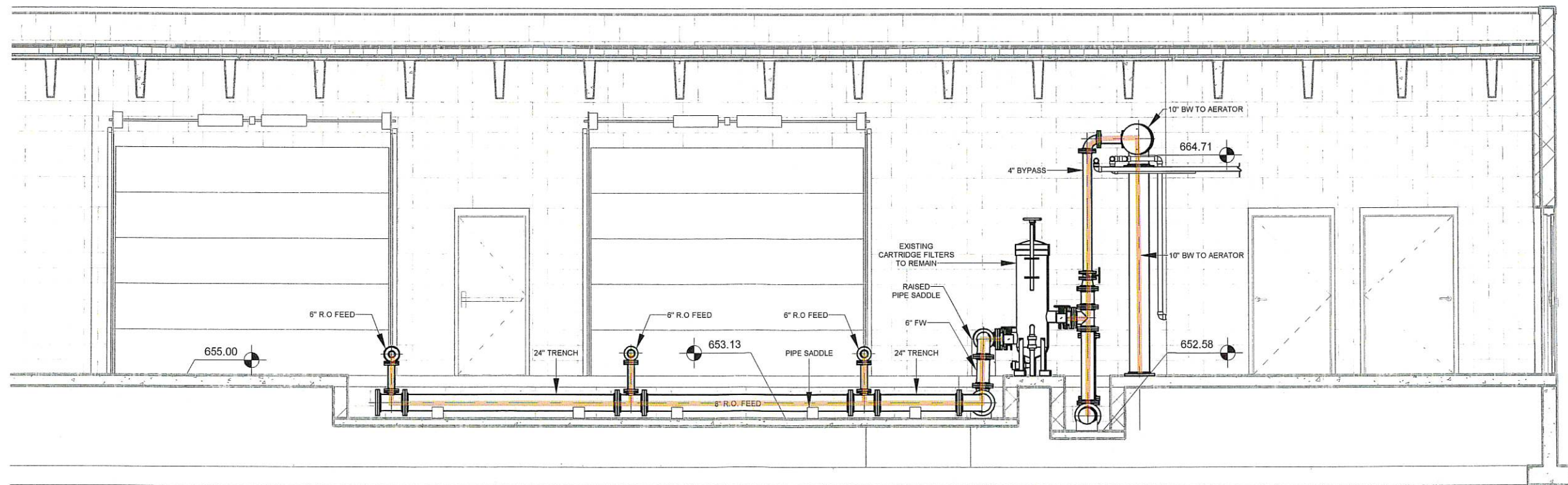
PLOTTED: 7/19/2022 4:58:36 PM

FILE PATH: Z:\Riverside 36139 WTP Pipe Failure\Drawing Files\Rev\03-Architectural\Riverside WTP Pipe Replacement Opt 2.rvt



Piping Cross Section South

3/16" = 1'-0"



Piping Cross Section North

3/16" = 1'-0"

NOTES:

1. NEW STAINLESS STEEL PIPING TO BE INSTALLED SHOWN BOLD.

| DATE | REVISIONS |
|-----------|---|
| 7-19-2022 | IMPERIAL WIDE FLANGES REPLACED WITH CLASS 150 SLIP-ON FLANGES FOR ALL PIPE SIZES. |
| | |
| | |
| | |

| | |
|------------|---------------|
| SCALE | 3/16" = 1'-0" |
| DRAWN | JLE, MPL |
| CHECKED | |
| APPROVED | |
| DATE | 7-14-2022 |
| ISSUED FOR | REVIEW |



**RIVERSIDE WTP PIPE IMPROVEMENTS
CITY OF RIVERSIDE**

2600 University Parkway - Suite 1 • Coralville, Iowa 52241-1565
319-466-1000 • 319-466-1008(FAX) • 888-241-8001(WATS)

PROCESS PIPING SECTIONS

| | |
|----------|--------|
| DWG. NO. | A-103 |
| PROJECT | 36139 |
| | 3 OF 3 |