

**CITY OF RIVERSIDE
PLANNING AND ZONING COMMISSION MEETING
AT RIVERSIDE FIRE STATION**

271 E 1ST ST

Tuesday, October 27, 2020 at 6:00 pm

Call meeting to order

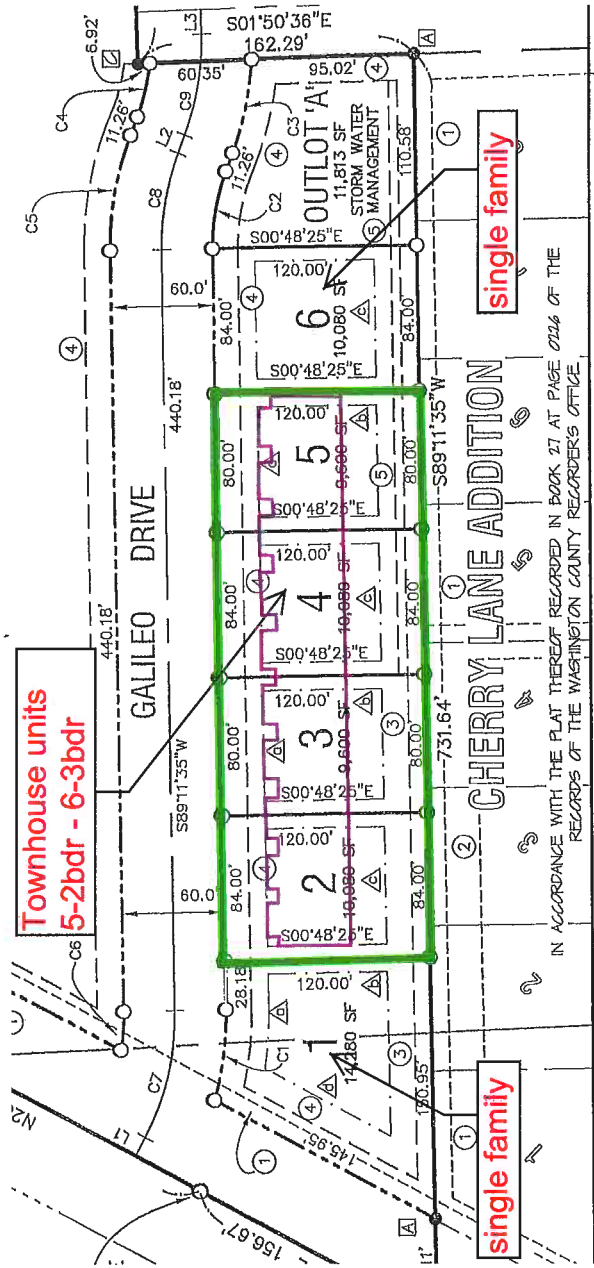
Roll Call

Approval of the agenda

Approve September 28, 2020 minutes

Review of proposal from Apex for Galileo Drive

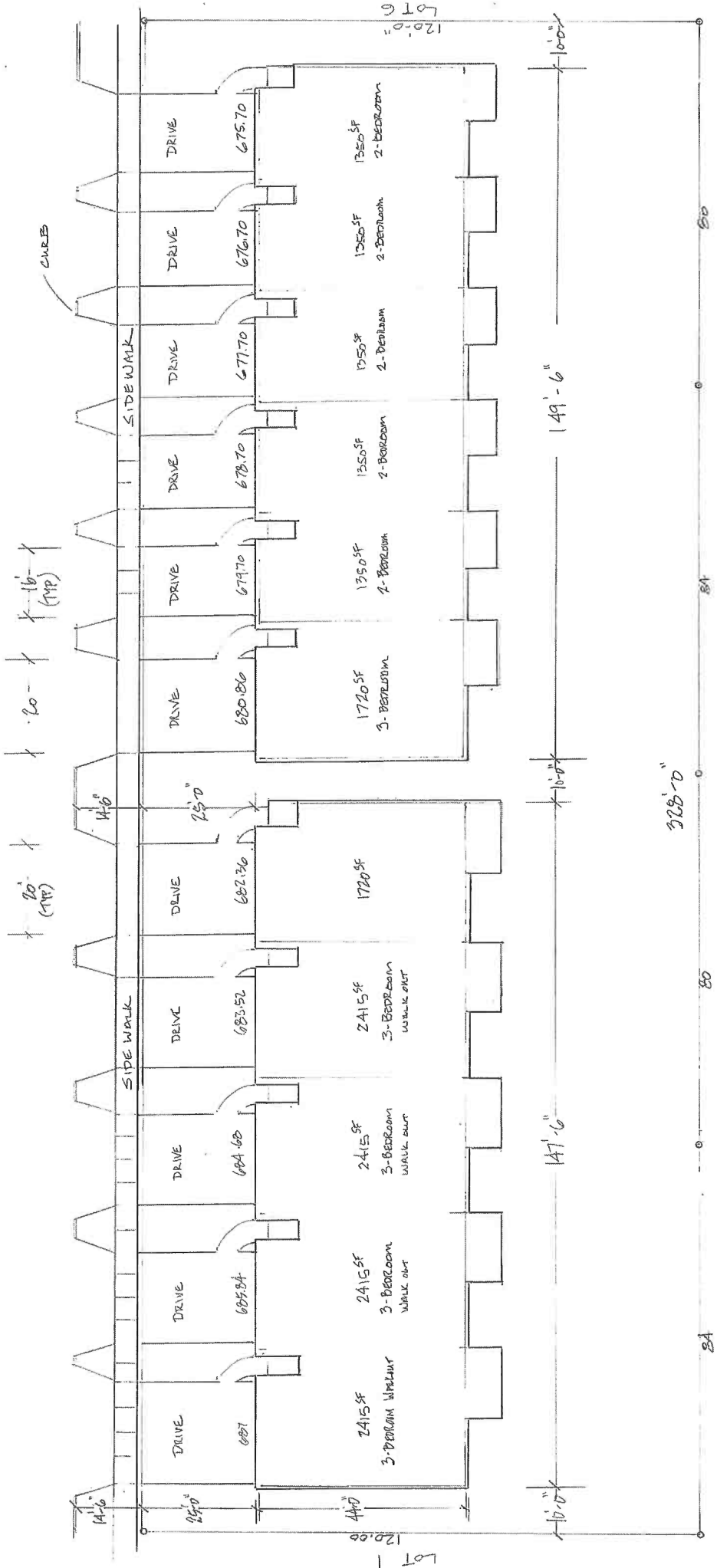
Adjourn meeting



IN ACCORDANCE WITH THE PLAT THEREOF RECORDED IN BOOK 27 AT PAGE 0124 OF THE RECORDS OF THE WASHINGTON COUNTY RECORDERS OFFICE

EMULSED DRIVE

STREET



Lot = 120'-0"

Lot = 120'-0"

84

80

84

80

10'-0"

147'-6"

10'-0"

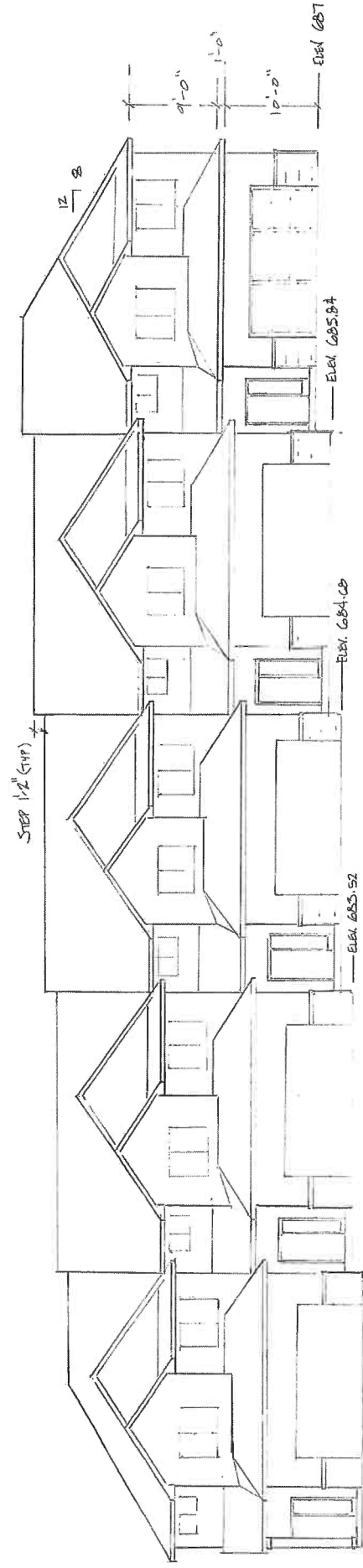
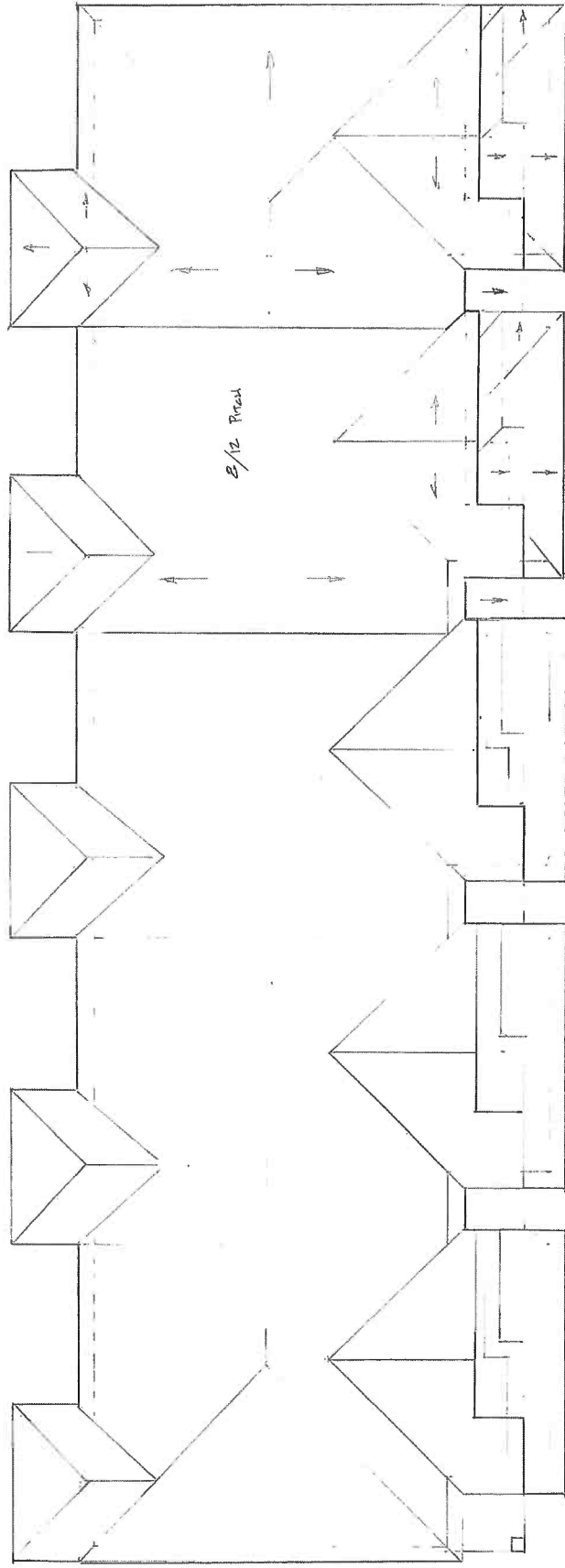
149'-6"

10'-0"

308'-0"

GRAILED TOWN HOMES

ROOF PLAN



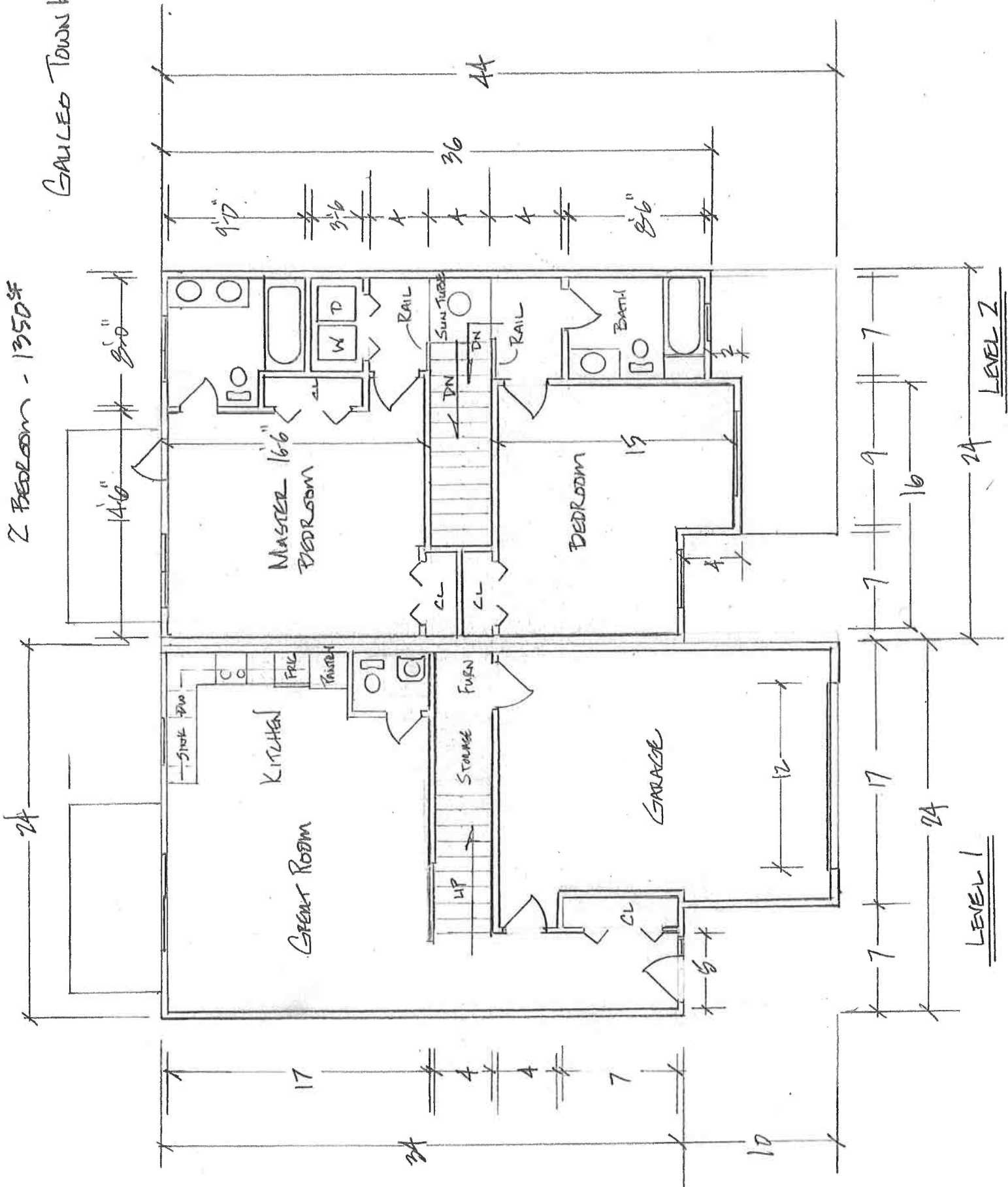
ELEVATION

Elev. 682.36



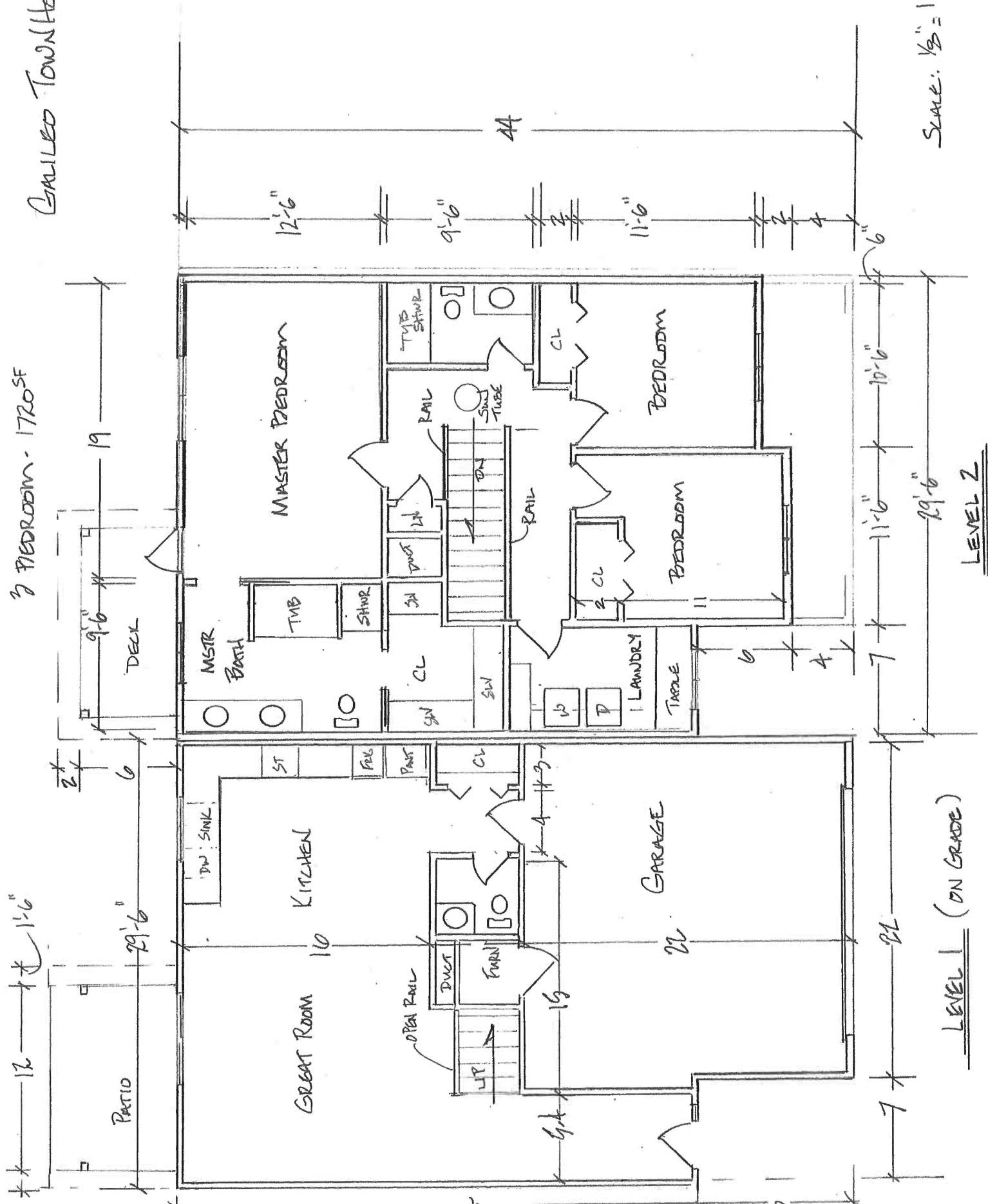
GAULED TOWN HOMES

2 Bedroom - 1350sq



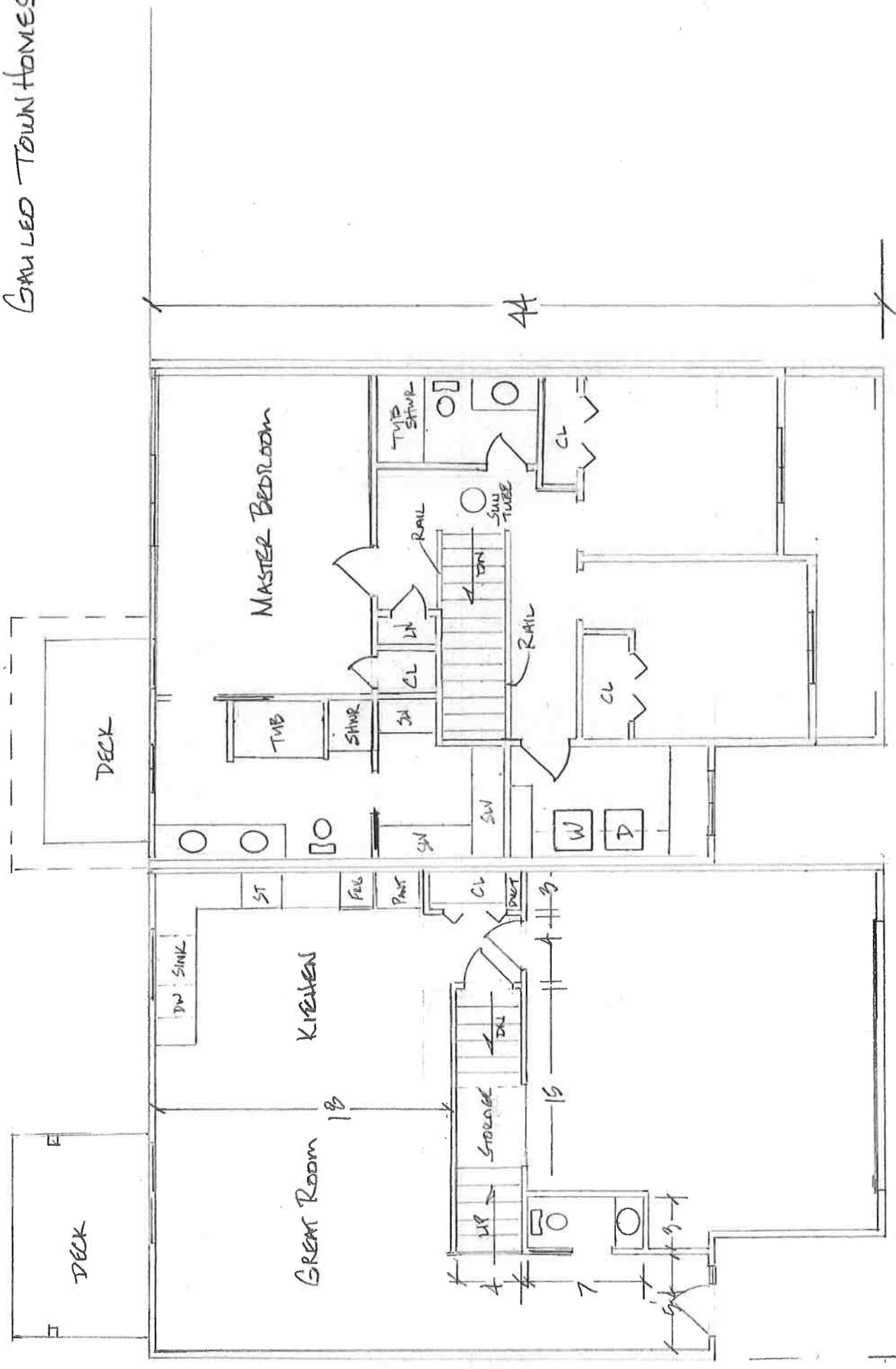
GAILED TOWNHOMES

3 BEDROOM - 1720 SF



3 Bedroom - 2415

GAULED TOWNHOMES

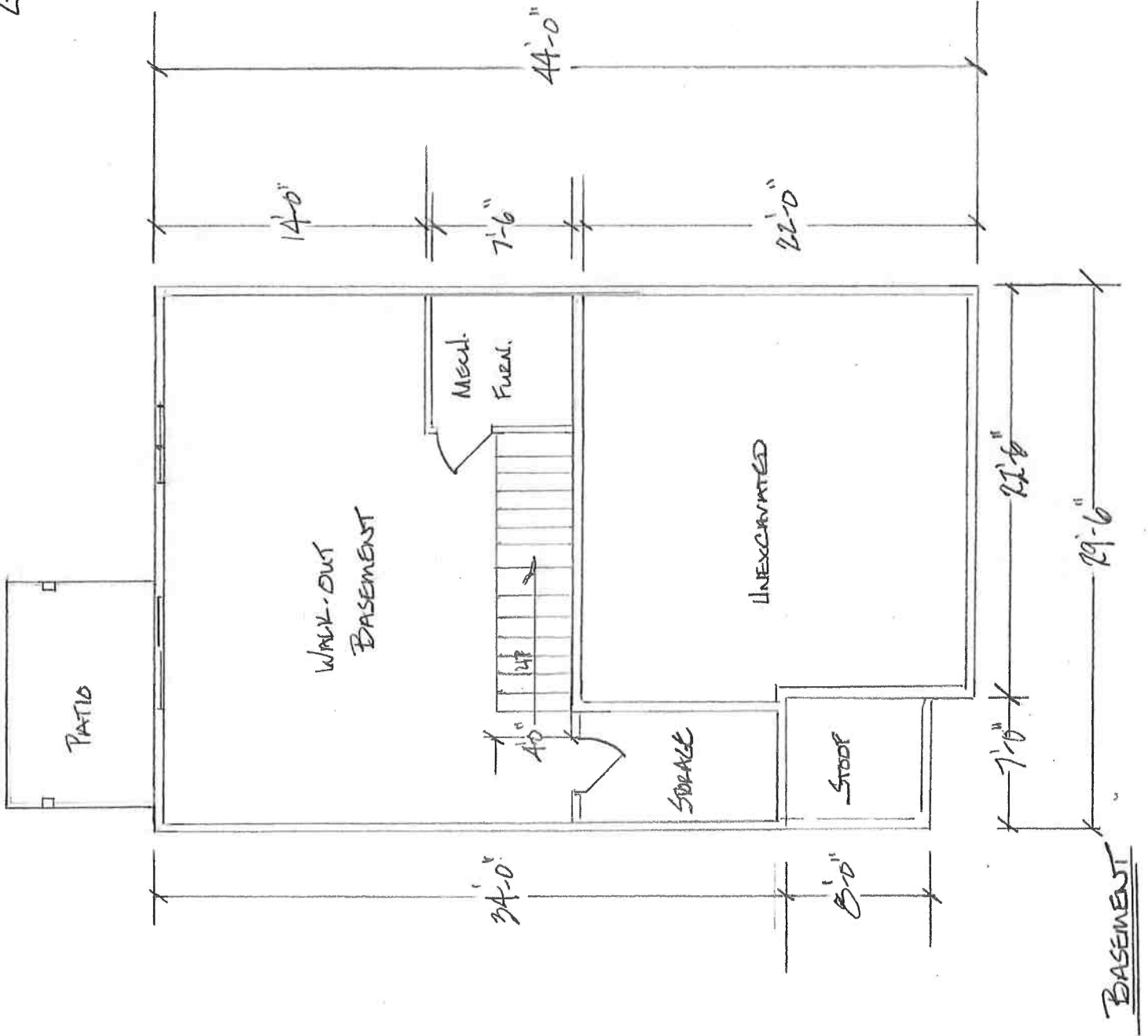


LEVEL 1 (WITH BASEMENT)

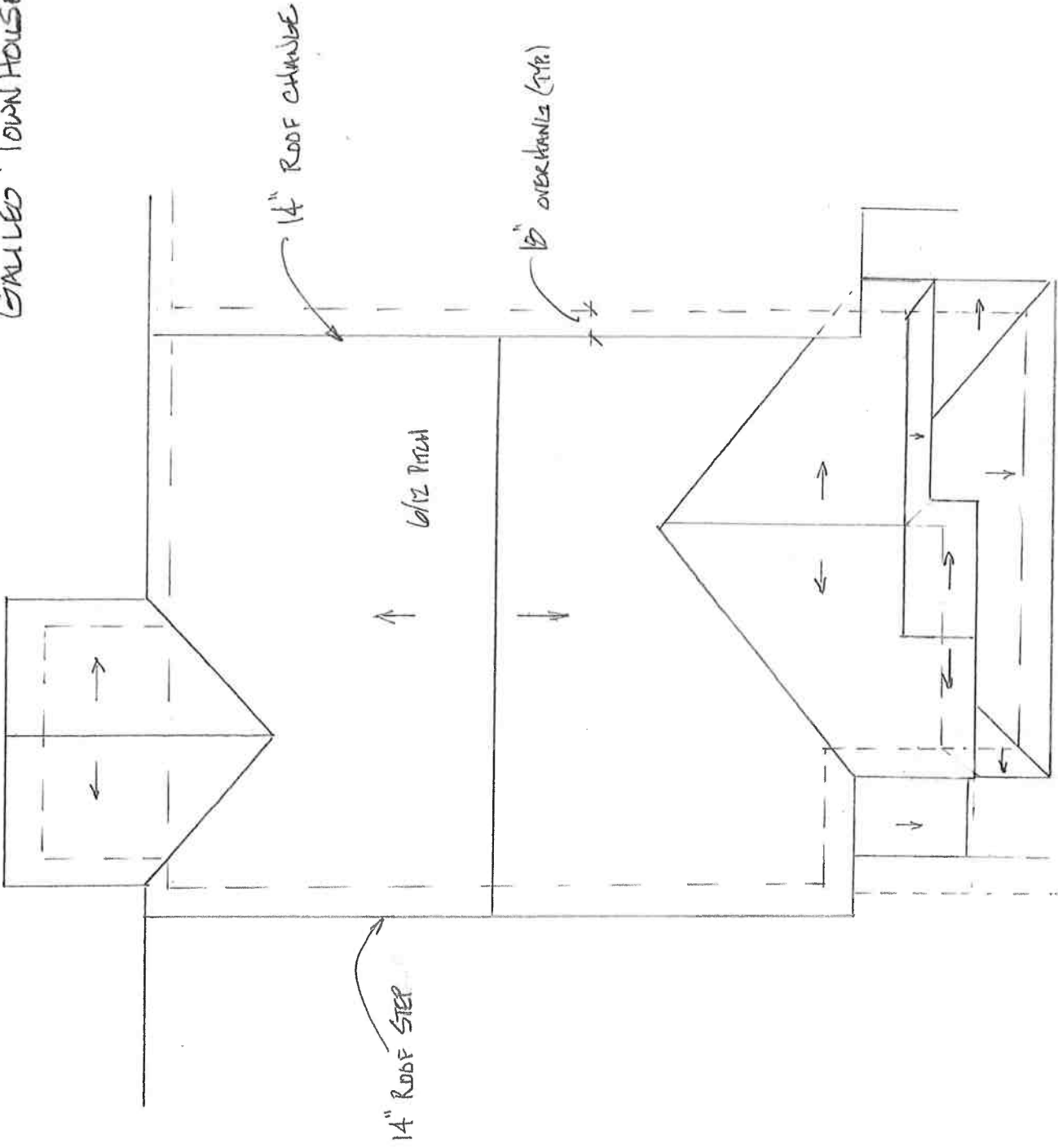
LEVEL 2

SCALE: 1/8" = 1'-0"

GRAVELLED TOWN HOMES



GRAILED TOWNHOUSE



ROOF PLAN

SCALE: 1/8" = 1'-0"