

**CITY OF RIVERSIDE COUNCIL MEETING AGENDA**  
**RIVERSIDE CITY HALL COUNCIL CHAMBERS**  
**60 N GREENE STREET**  
SPECIAL MEETING  
Monday, September 30, 2019 – 6:30 P.M.  
COUNCIL WORKSESSION TO FOLLOW MEETING  
**REVISED 9-27-19**

**NOTICE TO THE PUBLIC:** This is a meeting of the City Council to conduct the regular business of the City. Every item on the agenda is an item of discussion and action if needed.

1. Call meeting to order
2. Approval of agenda
3. Resolution #093019-01 Approve the Street Financial Report for FY ending 6/30/19.
4. Request to remove two trees in City ROW.
5. **Culvert extension at 275 W 1<sup>st</sup> Street**
6. Motion to adjourn

**COUNCIL WORK SESSION:**

## Becky

---

**From:** Mayor <mayor@cityofriversideiowa.com>  
**Sent:** Thursday, September 26, 2019 4:13 PM  
**To:** Becky  
**Cc:** City Admin  
**Subject:** Fwd: Bill Poch Culvert to East  
**Attachments:** image001.png; Untitled attachment 00089.html; 2245038billpocheast.pdf; Untitled attachment 00092.html

Hi, Becky

Can you update the agenda for Monday to include a discussion on this?

Let me know if you have any questions

Begin forwarded message:

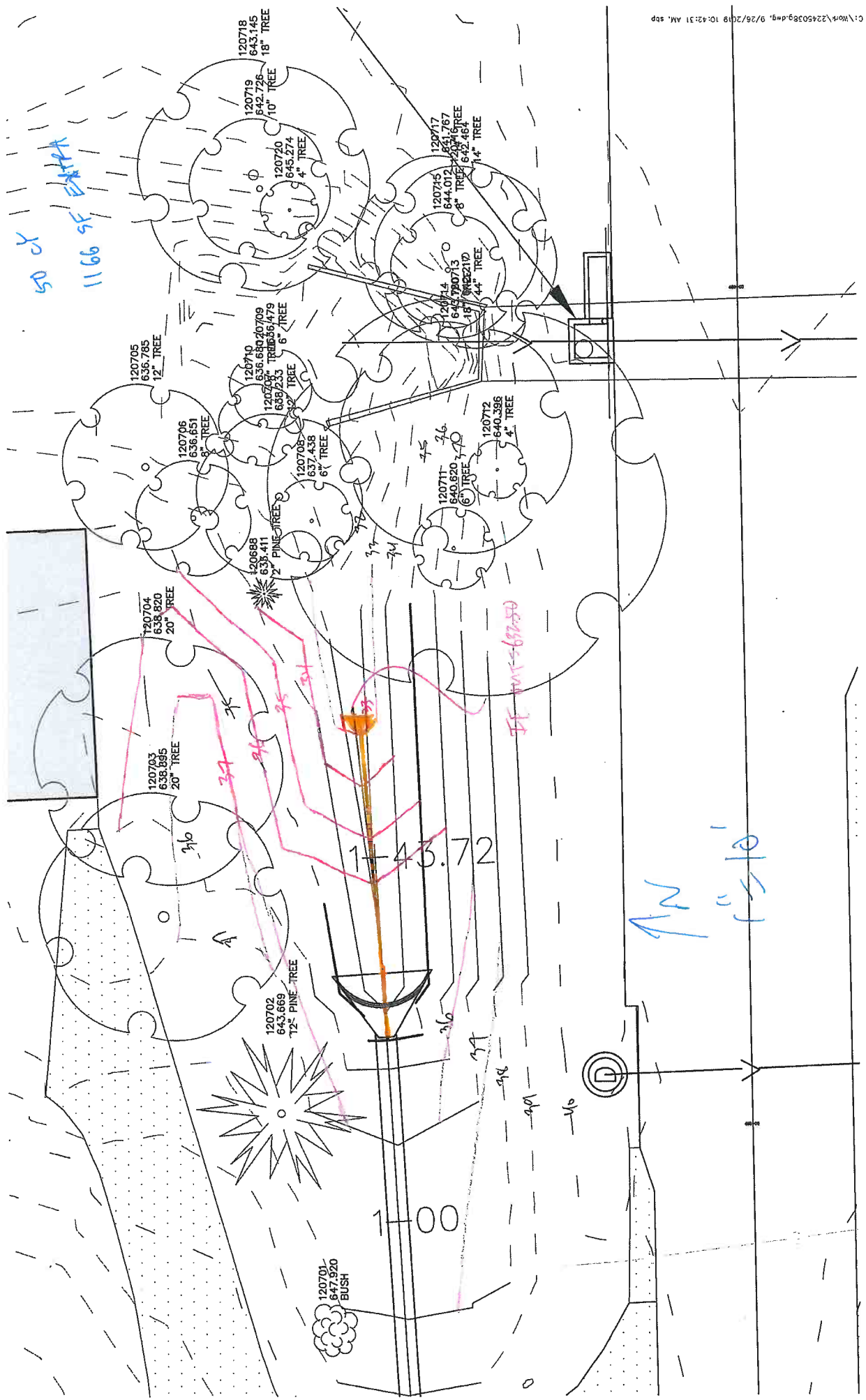
**From:** Scott Pottorff <[S.pottorff@mmsconsultants.net](mailto:S.pottorff@mmsconsultants.net)>  
**Date:** September 26, 2019 at 3:41:47 PM CDT  
**To:** [admin@cityofriversideiowa.com](mailto:admin@cityofriversideiowa.com), [mayor@cityofriversideiowa.com](mailto:mayor@cityofriversideiowa.com)  
**Cc:** Bill Poch <[billpoch@aol.com](mailto:billpoch@aol.com)>  
**Subject:** Bill Poch Culvert to East

Here is my estimated cost to extend the culvert to the east of Bill's driveway by 32 as I discussed with him last week. This includes a small berm to protect his garage. Attached is a hand sketch of the proposed plan.

32 LF 24" Storm Sewer at \$66/LF	\$2,112.00
30 CY Excavation at \$40/CY	\$1,200.00
20 CY Topsoil at \$35/CY	\$700.00
12 SQ Sod at \$60/SQ	\$720.00
Total	\$4,732.00

I don't see where there is a benefit to the City by doing this work.

Feel free to contact me with any questions.



50' x  
1166 SF EXTRA

120718  
643.145  
18" TREE

120719  
842.726  
10" TREE

120720  
645.274  
4" TREE

120717  
644.012  
8" TREE

120715  
644.012  
8" TREE

120714  
644.012  
8" TREE

120705  
636.785  
12" TREE

120710  
636.650  
8" TREE

120709  
636.650  
8" TREE

120708  
636.651  
8" TREE

120707  
636.651  
8" TREE

120706  
636.651  
8" TREE

120705  
636.651  
8" TREE

120712  
640.386  
4" TREE

120711  
640.620  
6" TREE

120710  
636.650  
8" TREE

120709  
636.650  
8" TREE

120708  
636.651  
8" TREE

120707  
636.651  
8" TREE

120706  
636.651  
8" TREE

120705  
636.651  
8" TREE

120698  
638.411  
12" PINE TREE

120704  
638.820  
20" TREE

120703  
638.835  
20" TREE

120702  
643.669  
12" PINE TREE

120701  
647.920  
BUSH

120700  
647.920  
BUSH

120700  
647.920  
BUSH

120700  
647.920  
BUSH

120700  
647.920  
BUSH

120700  
647.920  
BUSH

120700  
647.920  
BUSH

120700  
647.920  
BUSH

120700  
647.920  
BUSH

120700  
647.920  
BUSH

120704  
638.820  
20" TREE

120703  
638.835  
20" TREE

120702  
643.669  
12" PINE TREE

120701  
647.920  
BUSH

120700  
647.920  
BUSH

120700  
647.920  
BUSH

120700  
647.920  
BUSH

120700  
647.920  
BUSH

120700  
647.920  
BUSH

120700  
647.920  
BUSH

120700  
647.920  
BUSH

120700  
647.920  
BUSH

120700  
647.920  
BUSH

120700  
647.920  
BUSH

120700  
647.920  
BUSH

1-43.72

1-00

IF 1111-562250

N  
1111-562250

P